

Recombinant Human Bcl-2 Protein

Catalog No.: RP00062LQ **Recombinant**

Sequence Information

Species	Gene ID	Swiss Prot
Human	596	P10415

Tags

No tag

Synonyms

BCL2; Bcl-2; PPP1R50; apoptosis regulator Bcl-2;Bcl-2;PPP1R50

Product Information

Source	Purification
<i>E. coli</i>	> 95% by SDS-PAGE.

Calculated MW	Observed MW
23.17 kDa	25 kDa

Endotoxin

Please contact us for more information.

Formulation

Supplied in 20mM Tris□200mM NaCl□30% Glycerol□1mM DTT, pH 8.0Contact us for customized product form or formulation.

Reconstitution

Background

This protein is an integral outer mitochondrial membrane protein that blocks the apoptotic death of some cells such as lymphocytes. Constitutive expression of BCL2, such as in the case of translocation of BCL2 to Ig heavy chain locus, is thought to be the cause of follicular lymphoma.

Basic Information

Description

Recombinant Human Bcl-2 Protein is produced by *E. coli* expression system. The target protein is expressed with sequence (Ala2-Asp211) of human BCL2 (Accession #NP_000624.2).

Bio-Activity

Measured by its binding ability in a functional ELISA. Immobilized Human BCL-XL Protein at 2 µg/mL (100 µL/well) can bind BCL2 with a linear range of 3.9-421 ng/mL.

Storage

Store at -70°C. This product is stable at ≤ -70°C for up to 1 year from the date of receipt. For optimal storage, aliquot into smaller quantities after centrifugation and store at recommended temperature. Avoid repeated freeze-thaw cycles. Avoid repeated freeze/thaw cycles.

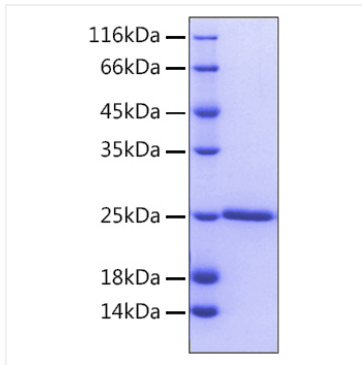
Contact

☎ | 400-999-6126

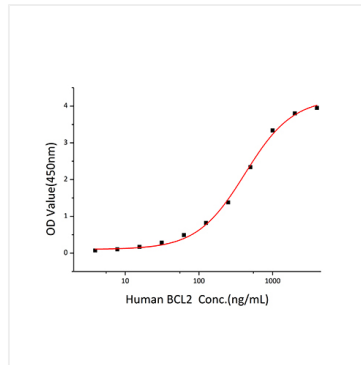
✉ | cn.market@abclonal.com.cn

🌐 | www.abclonal.com.cn

Validation Data



Recombinant Human Bcl-2 Protein was determined by SDS-PAGE with Coomassie Blue, showing a band at 25 kDa.



Immobilized Human BCL-XL Protein at 2 $\mu\text{g/mL}$ (100 μL /well) can bind BCL2 with a linear range of 3.9-421 ng/mL.