

Recombinant Human Ep-CAM/TROP-1/CD326 Protein

Catalog No.: RP00073 **Recombinant**

Sequence Information

Species	Gene ID	Swiss Prot
Human	4072	P16422

Tags

C-His

Synonyms

DIAR5; EGP-2; EGP314; EGP40; ESA; HNPCC8; KS1/4; KSA; M4S1; MIC18; MK-1; TACSTD1; TROP1; EPCAM; DIAR5; epithelial cell adhesion molecule; EGP-2; EGP314; EGP40; ESA; HNPCC8; KS1/4; KSA; M4S1; MIC18; MK-1; TACSTD1; TROP1

Product Information

Source	Purification
HEK293 cells	> 95% by SDS-PAGE.

Calculated MW	Observed MW
28.26 kDa	35-40 kDa

Endotoxin

< 0.1 EU/μg of the protein by LAL method.

Formulation

Lyophilized from a 0.22 μm filtered solution of PBS, pH 7.4. Contact us for customized product form or formulation.

Reconstitution

Centrifuge the vial before opening. Reconstitute to a concentration of 0.1-0.5 mg/mL in sterile distilled water. Avoid vortex or vigorously pipetting the protein. For long term storage, it is recommended to add a carrier protein or stabilizer (e.g. 0.1% BSA, 5% HSA, 10% FBS or 5% Trehalose), and aliquot the reconstituted protein solution to minimize freeze-thaw cycles.

Contact

☎ | 400-999-6126

✉ | cn.market@abclonal.com.cn

Background

This protein is a carcinoma-associated antigen and is a member of a family that includes at least two type I membrane proteins. This antigen is expressed on most normal epithelial cells and gastrointestinal carcinomas and functions as a homotypic calcium-independent cell adhesion molecule. The antigen is being used as a target for immunotherapy treatment of human carcinomas.

Basic Information

Description

Recombinant Human Ep-CAM/TROP-1/CD326 Protein is produced by HEK293 cells expression system. The target protein is expressed with sequence (Gln24-Lys265) of human EpCAM/TROP-1 (Accession #NP_002345.2) fused with a 6×His tag at the C-terminus.

Bio-Activity

Measured by the ability of the immobilized protein to support the adhesion of NIH-3T3 mouse embryonic fibroblast cells. When cells are added to EpCAM-His coated plates (1.25 μg/mL, 100 μL/well), approximately >30% will adhere specifically after 30 minutes at 37°C.

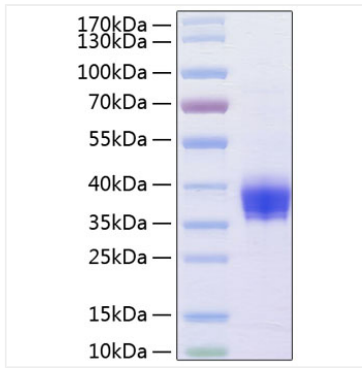
Storage

Store at -20°C. Store the lyophilized protein at -20°C to -80°C up to 1 year from the date of receipt. After reconstitution, the protein solution is stable at -20°C for 3 months, at 2-8°C for up to 1 week. Avoid repeated freeze/thaw cycles.



| www.abclonal.com.cn

Validation Data



Recombinant Human Ep-CAM/TROP-1/CD326 Protein was determined by SDS-PAGE with Coomassie Blue, showing a band at 35-40 kDa.