

Catalog No.: RP00082 **Recombinant**

Species	Gene ID	Swiss Prot
Human	1969	P29317

C-His

ARCC2:CTPA:CTPP1:CTRCT6:ECK:EPHA2

Source	Purification
HEK293 cells	≥ 95 % as determined by SDS-PAGE

Calculated MW	Observed MW
56.95 kDa	70 kDa

< 0.1 EU/μg of the protein by LAL method.

Lyophilized from a 0.22 μm filtered solution of PBS, pH 7.4. Contact us for customized product form or formulation.

Centrifuge the vial before opening. Reconstitute to a concentration of 0.1-0.5 mg/mL in sterile distilled water. Avoid vortex or vigorously pipetting the protein. For long term storage, it is recommended to add a carrier protein or stabilizer (e.g. 0.1% BSA, 5% HSA, 10% FBS or 5% Trehalose), and aliquot the reconstituted protein solution to minimize free-thaw cycles.

 | 400-999-6126

✉ cn.market@abclonal.com.cn

 | www.abclonal.com.cn

Eph receptor A2 (Ephrin type-A receptor 2 or EphA2) is a member of the ephrin receptor subfamily of the protein-tyrosine kinase family. The receptor tyrosine kinase which binds promiscuously membrane-bound ephrin-A family ligands residing on adjacent cells, leading to contact-dependent bidirectional signaling into neighboring cells. The signaling pathway downstream of the receptor is referred to as forward signaling while the signaling pathway downstream of the ephrin ligand is referred to as reverse signaling. Activated by the ligand ephrin-A1/EFNA1 regulates migration, integrin-mediated adhesion, proliferation and differentiation of cells. Regulates cell adhesion and differentiation through DSG1/desmoglein-1 and inhibition of the ERK1/ERK2 (MAPK3/MAPK1, respectively) signaling pathway. May also participate in UV radiation-induced apoptosis and have a ligand-independent stimulatory effect on chemotactic cell migration.

Recombinant Human EphA2/ECK Protein is produced by HEK293 expression system. The target protein is expressed with sequence (Gln25-Asn534) of human EphA2 (Accession #NP_004422.2) fused with a 6xHis tag at the C-terminus.

Measured by its binding ability in a functional ELISA. Immobilized Human EphA2 at 1 $\mu\text{g/mL}$ (100 μL /well) can bind Human EFNA1 with a linear range of 0.098-4.084 ng/mL.

The product is shipped at ambient temperature. Upon receipt, store it immediately at the temperature recommended below.

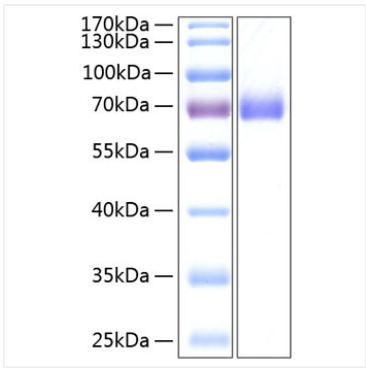
Store at -20°C. Store the lyophilized protein at -20°C to -80 °C up to 1 year from the date of receipt.

After reconstitution, the protein solution is stable at -20°C for 3 months, at 2-8°C for up to 1 week.

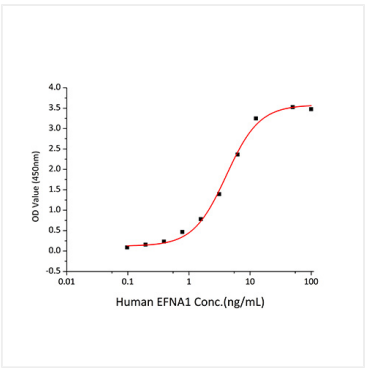
Avoid repeated freeze/thaw cycles.

For your safety and health, please wear a lab coat and disposable gloves for handling.

Validation Data



Recombinant Human EphA2/ECK Protein was determined by SDS-PAGE under reducing conditions with Coomassie Blue.



Immobilized Human EphA2 at 1 μ g/mL (100 μ L/well) can bind Human EFNA1 with a linear range of 0.098-4.084 ng/mL.