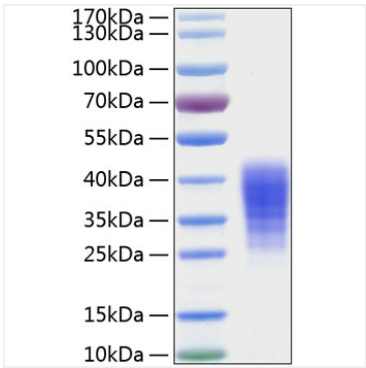


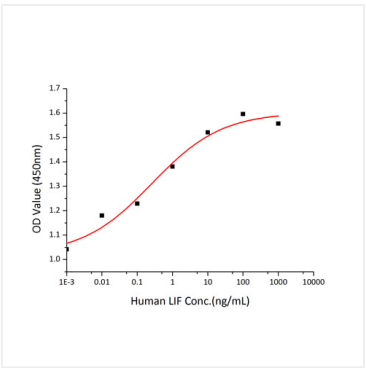
* □□□□□□□□□□□□□□□□□□□□□□□□

Avoid repeated freeze/thaw cycles.

Validation Data



Recombinant Human Leukemia inhibitory factor/LIF Protein was determined by SDS-PAGE under reducing conditions with Coomassie Blue.



Recombinant Human LIF stimulates cell proliferation of the TF-1 human erythroleukemic cells. The ED₅₀ for this effect is typically 0.1-0.3 ng/mL, corresponding to a specific activity of 3.33×10⁶-1×10⁷units/mg.