

Recombinant Human CSF-2/GM-CSF Protein

Catalog No.: RP00094 **Recombinant** **1 Publications**

Sequence Information

Species	Gene ID	Swiss Prot
Human	1437	P04141

Tags

C-His

Synonyms

CSF2;GMCSF

Product Information

Source	Purification
HEK293 cells	> 92% by SDS-PAGE.

Calculated MW	Observed MW
15.02 kDa	20-32 kDa

Endotoxin

< 0.1 EU/μg of the protein by LAL method.

Formulation

Lyophilized from a 0.22 μm filtered solution of PBS, pH 7.4. Contact us for customized product form or formulation.

Reconstitution

Centrifuge the vial before opening. Reconstitute to a concentration of 0.1-0.5 mg/mL in sterile distilled water. Avoid vortex or vigorously pipetting the protein. For long term storage, it is recommended to add a carrier protein or stabilizer (e.g. 0.1% BSA, 5% HSA, 10% FBS or 5% Trehalose), and aliquot the reconstituted protein solution to minimize free-thaw cycles.

Contact

☎ | 400-999-6126

✉ | cn.market@abclonal.com.cn

🌐 | www.abclonal.com.cn

Background

The protein encoded by this gene is a cytokine that controls the production, differentiation, and function of granulocytes and macrophages. The active form of the protein is found extracellularly as a homodimer. This gene has been localized to a cluster of related genes at chromosome region 5q31, which is known to be associated with interstitial deletions in the 5q- syndrome and acute myelogenous leukemia. Other genes in the cluster include those encoding interleukins 4, 5, and 13.

Basic Information

Description

Recombinant Human CSF-2/GM-CSF Protein is produced by HEK293 expression system. The target protein is expressed with sequence (Ala18-Glu144) of human GM-CSF/CSF2 (Accession #NP_000749.2) fused with a 6×His tag at the C-terminus.

Bio-Activity

Measured in a cell proliferation assay using TF-1 human erythroleukemic cells. The ED₅₀ for this effect is 30-140 pg/mL, corresponding to a specific activity of 7.14×10⁶-3.33×10⁷ units/mg.

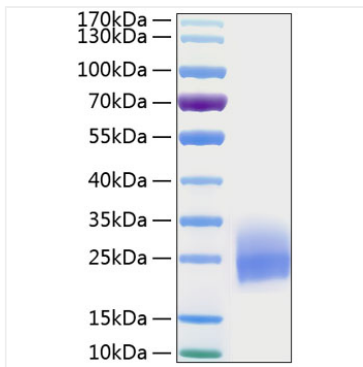
Storage

Store at -20°C. Store the lyophilized protein at -20°C to -80 °C up to 1 year from the date of receipt.

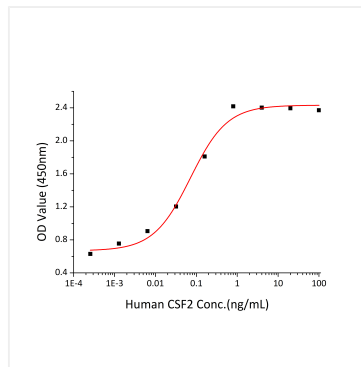
After reconstitution, the protein solution is stable at -20°C for 3 months, at 2-8°C for up to 1 week.

Avoid repeated freeze/thaw cycles.

Validation Data



Recombinant Human CSF-2/GM-CSF Protein was determined by SDS-PAGE with Coomassie Blue, showing a band at 20-32 kDa.



Recombinant Human CSF-2 stimulates cell proliferation of the TF-1 human erythroleukemic cells. The ED_{50} for this effect is 30-140 pg/mL, corresponding to a specific activity of 7.14×10^6 - 3.33×10^7 units/mg.