

Recombinant Human PECAM-1/CD31 Protein

Catalog No.: RP00096 **Recombinant**

Sequence Information

Species	Gene ID	Swiss Prot
Human	5175	P16284

Tags

C-His

Synonyms

C85791; Cd31; PECAM-1;
Pecam;PECAM1;CD31; PECA1; GPIIA';
endoCAM;
CD31/EndoCAM;CD31/EndoCAM;PECA1;P
ECAM-1;endoCAM;GPIIA

Product Information

Source	Purification
HEK293 cells	> 90% by SDS- PAGE.

Endotoxin

< 0.1 EU/μg of the protein by LAL method.

Formulation

Lyophilized from a 0.22 μm filtered solution of PBS, pH 7.4. Contact us for customized product form or formulation.

Reconstitution

Centrifuge the vial before opening. Reconstitute to a concentration of 0.1-0.5 mg/mL in sterile distilled water. Avoid vortex or vigorously pipetting the protein. For long term storage, it is recommended to add a carrier protein or stabilizer (e.g. 0.1% BSA, 5% HSA, 10% FBS or 5% Trehalose), and aliquot the reconstituted protein solution to minimize free-thaw cycles.

Contact

☎ | 400-999-6126

✉ | cn.market@abclonal.com.cn

🌐 | www.abclonal.com.cn

Background

The protein encoded by this gene is found on the surface of platelets, monocytes, neutrophils, and some types of T-cells, and makes up a large portion of endothelial cell intercellular junctions. The encoded protein is a member of the immunoglobulin superfamily and is likely involved in leukocyte migration, angiogenesis, and integrin activation.

Basic Information

Description

Recombinant Human PECAM-1/CD31 Protein is produced by HEK293 cells expression system. The target protein is expressed with sequence (Gln28-Lys601) of human CD31/PECAM1 (Accession #NP_000433.4) fused with a 6×His tag at the C-terminus.

Bio-Activity

1. Measured by its binding ability in a functional ELISA. Immobilized Human CD31 at 1 μg/mL (100 μL/well) can bind Human CTNNB1 with a linear range of 9.7 ng/mL-1.5 μg/mL. 2. Measured by the ability of the immobilized protein to support the adhesion of Jurkat human acute T cell leukemia cells. When 8×10⁴ cells/well are added to CD31 coated plates (5 μg/mL, 100 μL/well) in the presence of 10 μg/mL PHA, approximately 60-70% will adhere after 30 minutes at 37°C. 3. Measured by its binding ability in a functional ELISA. Immobilized APC anti-human CD31 Antibody at 1 μg/mL (100 μL/well) can bind Human CD31 Protein with a linear range of 4-25.8 ng/mL.

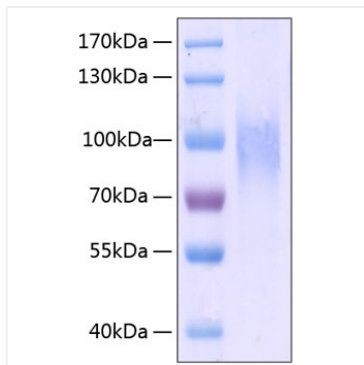
Storage

Store at -20°C. Store the lyophilized protein at -20°C to -80 °C up to 1 year from the date of receipt.

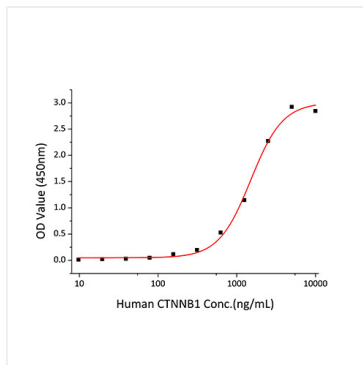
After reconstitution, the protein solution is stable at -20°C for 3 months, at 2-8°C for up to 1 week.

Avoid repeated freeze/thaw cycles.

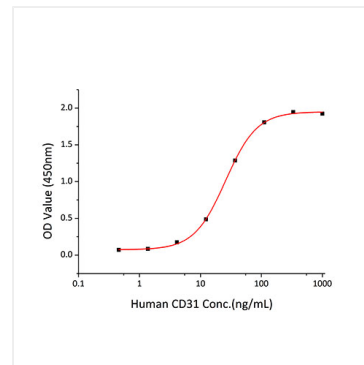
Validation Data



Recombinant Human PECAM-1/CD31 Protein was determined by SDS-PAGE with Coomassie Blue, showing a band at 85-105 kDa.



Immobilized Human CD31 at 1 $\mu\text{g}/\text{mL}$ (100 $\mu\text{L}/\text{well}$) can bind Human CTNNB1 with a linear range of 9.7 ng/ml-1.5 $\mu\text{g}/\text{mL}$.



Immobilized APC anti-human CD31 Antibody at 1 $\mu\text{g}/\text{mL}$ (100 $\mu\text{L}/\text{well}$) can bind Human CD31 Protein with a linear range of 4-25.8 ng/mL.