

Recombinant Human CDH17/LI-cadherin Protein

Catalog No.: RP00108 **Recombinant**

Sequence Information

Species	Gene ID	Swiss Prot
Human	1015	Q12864

Tags

C-His

Synonyms

CDH16; HPT-1; HPT1;CDH17;HPT-1;HPT1

Product Information

Source	Purification
HEK293 cells	> 90% by SDS-PAGE.

Calculated MW	Observed MW
85.82 kDa	105-115 kDa

Endotoxin

< 0.1 EU/μg of the protein by LAL method.

Formulation

Lyophilized from a 0.22 μm filtered solution of PBS, pH 7.4. Contact us for customized product form or formulation.

Reconstitution

Centrifuge the vial before opening. Reconstitute to a concentration of 0.1-0.5 mg/mL in sterile distilled water. Avoid vortex or vigorously pipetting the protein. For long term storage, it is recommended to add a carrier protein or stabilizer (e.g. 0.1% BSA, 5% HSA, 10% FBS or 5% Trehalose), and aliquot the reconstituted protein solution to minimize free-thaw cycles.

Contact

 | 400-999-6126 | cn.market@abclonal.com.cn | www.abclonal.com.cn

Background

This protein is a member of the cadherin superfamily, genes encoding calcium-dependent, membrane-associated glycoproteins. The encoded protein is cadherin-like, consisting of an extracellular region, containing 7 cadherin domains, and a transmembrane region but lacking the conserved cytoplasmic domain. The protein is a component of the gastrointestinal tract and pancreatic ducts, acting as an intestinal proton-dependent peptide transporter in the first step in oral absorption of many medically important peptide-based drugs. The protein may also play a role in the morphological organization of liver and intestine. Alternative splicing results in multiple transcript variants.

Basic Information

Description

Recombinant Human CDH17/LI-cadherin Protein is produced by HEK293 cells expression system. The target protein is expressed with sequence (Gln23-Met787) of human Cadherin-17/LI-cadherin/CDH17 (Accession #NP_001138135.1) fused with a 6×His tag at the C-terminus.

Bio-Activity

Measured by its binding ability in a functional ELISA. Immobilized Human CDH17 at 1μg/mL (100 μL/well) can bind anti Human CDH17 antibody with a linear range of 0.01-20ng/mL.

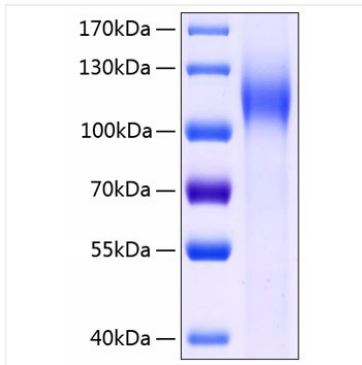
Storage

Store at -20°C. Store the lyophilized protein at -20°C to -80 °C up to 1 year from the date of receipt.

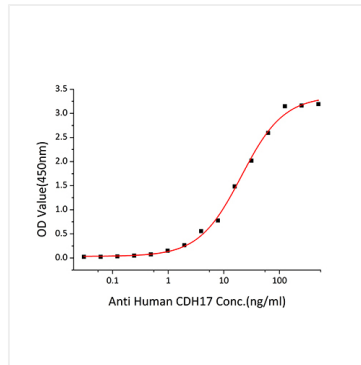
After reconstitution, the protein solution is stable at -20°C for 3 months, at 2-8°C for up to 1 week.

Avoid repeated freeze/thaw cycles.

Validation Data



Recombinant Human CDH17/L1-cadherin Protein was determined by SDS-PAGE with Coomassie Blue, showing a band at 105-115 kDa.



Immobilized Human CDH17 at 1 μ g/mL (100 μ L/well) can bind anti Human CDH17 antibody with a linear range of 0.01-20ng/mL.