

# Recombinant Human Clusterin/Apo-J/CLU Protein

Catalog No.: RP00109 **Recombinant**

## Sequence Information

Species	Gene ID	Swiss Prot
Human	1191	P10909

### Tags

C-His

### Synonyms

CLU;AAG4;APO-J;APOJ;CLI;CLU1;CLU2;KUB1;NA1/NA2;SGP-2;SGP2;SP-40;TRPM-2;TRPM2;clusterin; Clusterin alpha chain

## Product Information

Source	Purification
HEK293 cells	≥ 85 % as determined by SDS-PAGE.

Calculated MW	Observed MW
50.90 kDa	35-40 kDa

### Endotoxin

< 0.1 EU/μg of the protein by LAL method.

### Formulation

Lyophilized from a 0.22 μm filtered solution of PBS, pH 7.4. Contact us for customized product form or formulation.

### Reconstitution

Centrifuge the vial before opening. Reconstitute to a concentration of 0.1-0.5 mg/mL in sterile distilled water. Avoid vortex or vigorously pipetting the protein. For long term storage, it is recommended to add a carrier protein or stabilizer (e.g. 0.1% BSA, 5% HSA, 10% FBS or 5% Trehalose), and aliquot the reconstituted protein solution to minimize free-thaw cycles.

## Contact

☎ | 400-999-6126

✉ | [cn.market@abclonal.com.cn](mailto:cn.market@abclonal.com.cn)

🌐 | [www.abclonal.com.cn](http://www.abclonal.com.cn)

## Background

The protein encoded by this gene is a secreted chaperone that can under some stress conditions also be found in the cell cytosol. It has been suggested to be involved in several basic biological events such as cell death, tumor progression, and neurodegenerative disorders. Alternate splicing results in both coding and non-coding variants.

## Basic Information

### Description

Recombinant Human Clusterin/Apo-J/CLU Protein is produced by HEK293 expression system. The target protein is expressed with sequence (Asp23-Arg227 (βchain)&Ser228-Glu449 (αchain)) of human Clusterin/Apolipo J/Apo-J/CLU (Accession #NP\_001822) fused with a 6×His tag at the C-terminus.

### Bio-Activity

### Shipping

The product is shipped at ambient temperature. Upon receipt, store it immediately at the temperature recommended below.

### Storage

Store at -20°C. Store the lyophilized protein at -20°C to -80 °C up to 1 year from the date of receipt.

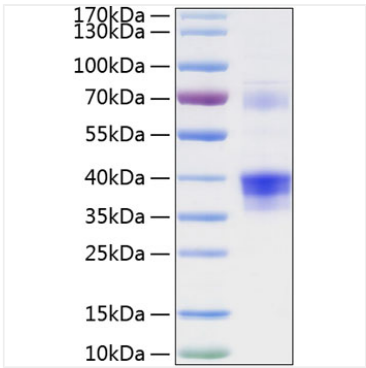
After reconstitution, the protein solution is stable at -20°C for 3 months, at 2-8°C for up to 1 week.

Avoid repeated freeze/thaw cycles.

### Operational Notes

For your safety and health, please wear a lab coat and disposable gloves for handling.

Validation Data



Recombinant Human Clusterin/Apo-J/CLU Protein was determined by SDS-PAGE under reducing conditions with Coomassie Blue.