

Recombinant Human ALCAM/CD166 Protein

Catalog No.: RP00119 **Recombinant**

Sequence Information

Species	Gene ID	Swiss Prot
Human	214	Q13740

Tags

C-hFc&His

Synonyms

ALCAM;CD166;MEMD; MEMD

Product Information

Source	Purification
HEK293 cells	> 97% by SDS-PAGE.

Calculated MW	Observed MW
85.57 kDa	120 kDa

Endotoxin

< 0.1 EU/μg of the protein by LAL method.

Formulation

Lyophilized from a 0.22 μm filtered solution of PBS, pH 7.4. Contact us for customized product form or formulation.

Reconstitution

Centrifuge the vial before opening. Reconstitute to a concentration of 0.1-0.5 mg/mL in sterile distilled water. Avoid vortex or vigorously pipetting the protein. For long term storage, it is recommended to add a carrier protein or stabilizer (e.g. 0.1% BSA, 5% HSA, 10% FBS or 5% Trehalose), and aliquot the reconstituted protein solution to minimize free-thaw cycles.

Contact

 | 400-999-6126 | cn.market@abclonal.com.cn | www.abclonal.com.cn

Background

This protein is activated leukocyte cell adhesion molecule (ALCAM), also known as CD166 (cluster of differentiation 166), which is a member of a subfamily of immunoglobulin receptors with five immunoglobulin-like domains (VVC2C2C2) in the extracellular domain. This protein binds to T-cell differentiation antigen CD6, and is implicated in the processes of cell adhesion and migration. Multiple alternatively spliced transcript variants encoding different isoforms have been found.

Basic Information

Description

Recombinant Human ALCAM/CD166 Protein is produced by HEK293 expression system. The target protein is expressed with sequence (Met1-Ala526) of human ALCAM/CD166 (Accession #NP_001618.2) fused with an Fc, 6×His tag at the C-terminus.

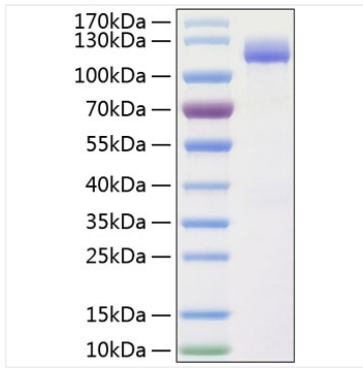
Bio-Activity

1. Measured by its binding ability in a functional ELISA. Immobilized Human CD6 at 1 μg/mL (100 μL/well) can bind Human CD166 with a linear range of 0.05-1.2 ng/mL. 2. Measured by its ability to block adhesion of Jurkat cells to immobilized Recombinant Human CD6 Protein. The ED₅₀ for this effect is 2.7-10.8 μg/mL.

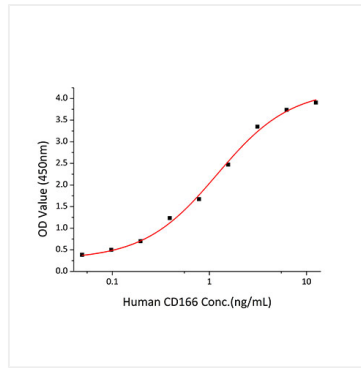
Storage

Store at -20°C. Store the lyophilized protein at -20°C to -80 °C up to 1 year from the date of receipt. After reconstitution, the protein solution is stable at -20°C for 3 months, at 2-8°C for up to 1 week. Avoid repeated freeze/thaw cycles.

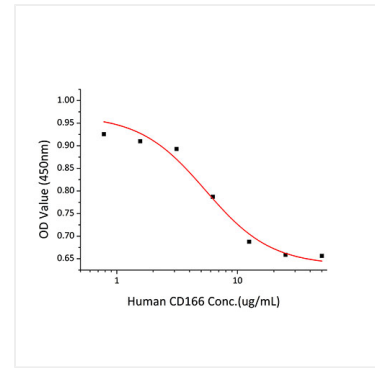
Validation Data



Active Recombinant Human ALCAM/CD166 Protein was determined by SDS-PAGE with Coomassie Blue, showing a band at 120 kDa.



Immobilized recombinant Human CD6 at 1 µg/mL (100 µL/well) can bind Human CD166 with a linear range of 0.05-1.2ng/mL.



Recombinant Human CD166 block adhesion of Jurkat cells to immobilized Recombinant Human CD6 Protein. The ED_{50} for this effect is 2.7-10.8 µg/mL.