

# Recombinant Human c-Kit ligand/SCF/KITLG Protein

Catalog No.: RP00124 **Recombinant**

## Sequence Information

Species	Gene ID	Swiss Prot
Human	4254	P21583

### Tags

C-His

### Synonyms

KITLG;DCUA;DFNA69;FPH2;FPHH;KL-1;Kit  
I;MGF;SCF;SF;SHEP7

## Product Information

Source	Purification
HEK293 cells	> 97% by SDS-PAGE.

### Endotoxin

< 0.1 EU/μg of the protein by LAL method.

### Formulation

Lyophilized from a 0.22 μm filtered solution of PBS, pH 7.4. Contact us for customized product form or formulation.

### Reconstitution

Centrifuge the vial before opening.  
Reconstitute to a concentration of 0.1-0.5 mg/mL in sterile distilled water. Avoid vortex or vigorously pipetting the protein. For long term storage, it is recommended to add a carrier protein or stabilizer (e.g. 0.1% BSA, 5% HSA, 10% FBS or 5% Trehalose), and aliquot the reconstituted protein solution to minimize free-thaw cycles.

## Background

The protein is tyrosine-kinase receptor. This ligand is a pleiotropic factor that acts in utero in germ cell and neural cell development, and hematopoiesis, all believed to reflect a role in cell migration. In adults, it functions pleiotropically, while mostly noted for its continued requirement in hematopoiesis.

## Basic Information

### Description

Recombinant Human c-Kit ligand/SCF/KITLG Protein is produced by HEK293 cells expression system. The target protein is expressed with sequence (Glu26-His214) of human SCF/C-kit ligand (Accession #NP\_000890.1) fused with a 6xHis tag at the C-terminus.

### Bio-Activity

1. Measured in a cell proliferation assay using TF-1 Human erythroleukemic cells. The ED<sub>50</sub> for this effect is 0.08-0.3 ng/mL. 2. Measured by its binding ability in a functional ELISA. Immobilized recombinant human SCF at 1 μg/mL (100 μL/well) can bind recombinant human CD117 with a linear range of 1-6 ng/mL.

### Storage

Store the lyophilized protein at -20°C to -80 °C for long term.  
After reconstitution, the protein solution is stable at -20 °C for 3 months, at 2-8 °C for up to 1 week.  
Avoid repeated freeze/thaw cycles.

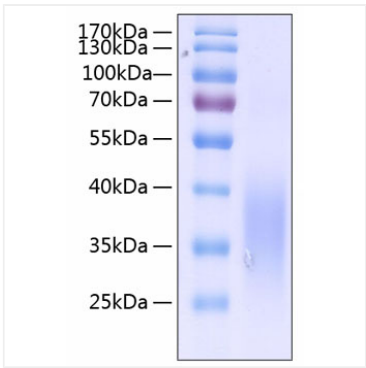
## Contact

☎ | 400-999-6126

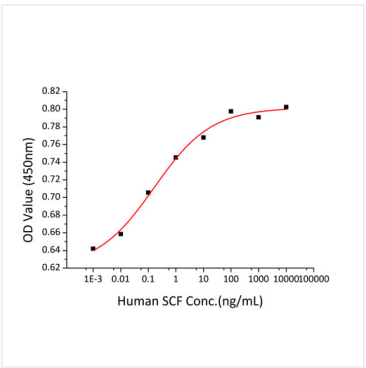
✉ | [cn.market@abclonal.com.cn](mailto:cn.market@abclonal.com.cn)

🌐 | [www.abclonal.com.cn](http://www.abclonal.com.cn)

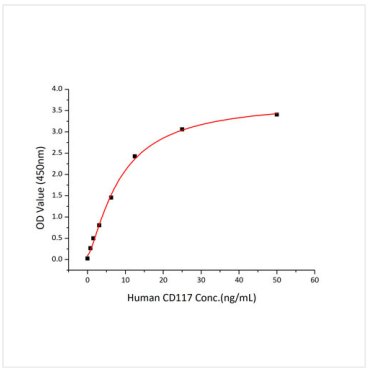
Validation Data



Recombinant Human c-Kit ligand/SCF/KITLG Protein was determined by SDS-PAGE with Coomassie Blue, showing a band at 30-40 kDa.



Recombinant Human SCF promotes the proliferation of TF-1 human erythroleukemic cells. The ED<sub>50</sub> for this effect is 0.08-0.3ng/mL.



Immobilized recombinant human SCF at 1 µg/mL (100 µL/well) can bind recombinant human CD117 with a linear range of 1-6 ng/mL.