

Recombinant Human Siglec-4/MAG/GMA Protein

Catalog No.: RP00133 **Recombinant**

Sequence Information

Species	Gene ID	Swiss Prot
Human	4099	P20916

Tags

C-hFc&His

Synonyms

MAG; GMA; Myelin-associated glycoprotein; Siglec-4a

Product Information

Source	Purification
HEK293 cells	> 95% by SDS-PAGE.

Calculated MW	Observed MW
81.44 kDa	100-140 kDa

Endotoxin

< 0.1 EU/μg of the protein by LAL method.

Formulation

Lyophilized from a 0.22 μm filtered solution of PBS, pH 7.4.

Reconstitution

Reconstitute to a concentration of 0.1-0.5 mg/mL in sterile distilled water.

Background

the protein is a type I membrane protein and member of the immunoglobulin superfamily. It is thought to be involved in the process of myelination. It is a lectin that binds to sialylated glycoconjugates and mediates certain myelin-neuron cell-cell interactions. Three alternatively spliced transcripts encoding different isoforms have been described for this gene.

Basic Information

Description

Recombinant Human Siglec-4/MAG/GMA Protein is produced by HEK293 cells expression system. The target protein is expressed with sequence (Gly20-Pro516) of Human Siglec-4/MAG/GMA (Accession #NP_002352.1) fused with hFc tag and His tag at the C-terminus.

Bio-Activity

Storage

Store at -20°C. Store the lyophilized protein at -20°C to -80 °C up to 1 year from the date of receipt. After reconstitution, the protein solution is stable at -20°C for 3 months, at 2-8°C for up to 1 week. Avoid repeated freeze/thaw cycles.

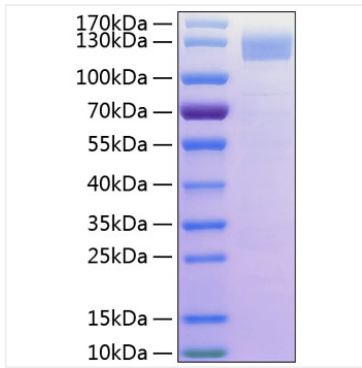
Contact

 | 400-999-6126

 | cn.market@abclonal.com.cn

 | www.abclonal.com.cn

Validation Data



Recombinant Human MAG/GMA/Siglec-4 Protein was determined by SDS-PAGE with Coomassie Blue, showing a band at 115-125 kDa.