

Recombinant Human SLAMF4/2B4/CD244 Protein

Catalog No.: RP00167

Recombinant

1 Publications

Sequence Information

Species	Gene ID	Swiss Prot
Human	51744	Q9BZW8

Tags

C-hFc&His

Synonyms

CD244;2B4;NAIL;NKR2B4;Nmrk;SLAMF4

Product Information

Source	Purification
HEK293 cells	> 95% by SDS-PAGE.

Calculated MW	Observed MW
48.89 kDa	70-90 kDa

Endotoxin

< 0.1 EU/μg of the protein by LAL method.

Formulation

Lyophilized from a 0.22 μm filtered solution of PBS, pH 7.4. Contact us for customized product form or formulation.

Reconstitution

Centrifuge the vial before opening. Reconstitute to a concentration of 0.1-0.5 mg/mL in sterile distilled water. Avoid vortex or vigorously pipetting the protein. For long term storage, it is recommended to add a carrier protein or stabilizer (e.g. 0.1% BSA, 5% HSA, 10% FBS or 5% Trehalose), and aliquot the reconstituted protein solution to minimize free-thaw cycles.

Contact

☎ | 400-999-6126

✉ | cn.market@abclonal.com.cn

🌐 | www.abclonal.com.cn

Background

Cluster of differentiation 24, also known as signal transducer CD24 or heat stable antigen CD24 (HSA), is a mucin-type glycosylphosphatidylinositol-linked glycoprotein expressed on the surface of B-cells, differentiating neuroblasts and many tumors. It is involved in molecular adhesion and metastatic tumor spread and serve as a normal receptor for P-selectin. The CD24 / P-selectin pathway could be important in dissemination of tumor cells by facilitating the interaction with platelet and endothelial cells. It has also been considered as a tumor marker. High rate of CD24 expressions have been found in epithelial ovarian cancer, breast cancer, non-small cell lung cancer, prostate cancer and pancreatic cancer.

Basic Information

Description

Recombinant Human SLAMF4/2B4/CD244 Protein is produced by HEK293 expression system. The target protein is expressed with sequence (Cys22-Arg221) of human 2B4/SLAMF/CD244 (Accession #NP_057466.1) fused with an Fc, 6xHis tag at the C-terminus.

Bio-Activity

Measured by its binding ability in a functional ELISA. Immobilized recombinant human CD48 at 5 μg/mL (100 μL/well) can bind recombinant human CD244 with a linear range of 0.2-1 μg/mL.

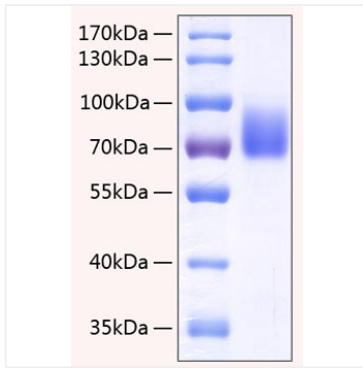
Storage

Store at -20°C. Store the lyophilized protein at -20°C to -80 °C up to 1 year from the date of receipt.

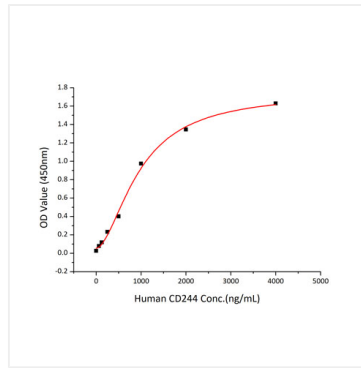
After reconstitution, the protein solution is stable at -20°C for 3 months, at 2-8°C for up to 1 week.

Avoid repeated freeze/thaw cycles.

Validation Data



Recombinant Human SLAMF4/2B4/CD244 Protein was determined by SDS-PAGE with Coomassie Blue, showing a band at 70-90 kDa.



Immobilized recombinant human CD48 at 5 $\mu\text{g/mL}$ (100 μL /well) can bind recombinant human CD244 with a linear range of 0.2-1 $\mu\text{g/mL}$.