

Recombinant Human SLAMF7/CRACC/CD319 Protein

Catalog No.: RP00169 **Recombinant**

Sequence Information

Species	Gene ID	Swiss Prot
Human	57823	Q9NQ25

Tags

C-hFc&His

Synonyms

SLAMF7;19A;CD319;CRACC;CS1

Product Information

Source	Purification
HEK293 cells	> 95% by SDS-PAGE.

Calculated MW	Observed MW
49.18 kDa	65-75 kDa

Endotoxin

< 0.1 EU/μg of the protein by LAL method.

Formulation

Lyophilized from a 0.22 μm filtered solution of PBS, pH 7.4. Contact us for customized product form or formulation.

Reconstitution

Centrifuge the vial before opening. Reconstitute to a concentration of 0.1-0.5 mg/mL in sterile distilled water. Avoid vortex or vigorously pipetting the protein. For long term storage, it is recommended to add a carrier protein or stabilizer (e.g. 0.1% BSA, 5% HSA, 10% FBS or 5% Trehalose), and aliquot the reconstituted protein solution to minimize free-thaw cycles.

Contact

 | 400-999-6126 | cn.market@abclonal.com.cn | www.abclonal.com.cn

Background

SLAM family member 7 (SLAMF7), also known as CRACC, CD319, CD2-like receptor-activating cytotoxic cells, and CS1, is a single-pass type I membrane protein and a member of the CD2 family of cell surface receptors. SLAMF7 is expressed on the surface of NK cells, CD8+ T cells, activated B cells, and mature dendritic cells but not in promyelocytic, B-cell lines, or T-cell lines. In human NK cells, activated SLAMF7 transmits signals following association with the adaptor protein EAT-2. In the absence of EAT-2, SLAMF7 potentially inhibited natural killer cell function. It was also inhibitory in T cells, which are typically devoid of EAT-2. Thus, SLAMF7 can exert activating or inhibitory influences on cells of the immune system depending on cellular context and the availability of effector proteins.

Basic Information

Description

Recombinant Human SLAMF7/CRACC/CD319 Protein is produced by HEK293 cells expression system. The target protein is expressed with sequence (Ser23-Met226) of human SLAMF7/CRACC/CD319 (Accession #NP_067004.3) fused with an Fc, 6×His tag at the C-terminus.

Bio-Activity

Measured by its binding ability in a functional ELISA. Immobilized Recombinant Human SLAMF7 at 2 μg/mL (100 μL/well) can bind Anti-SLAMF7 antibody with a linear range of 60-150 ng/mL.

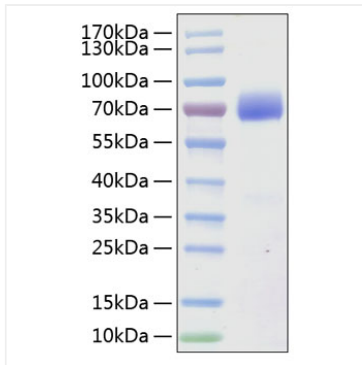
Storage

Store at -20°C. Store the lyophilized protein at -20°C to -80 °C up to 1 year from the date of receipt.

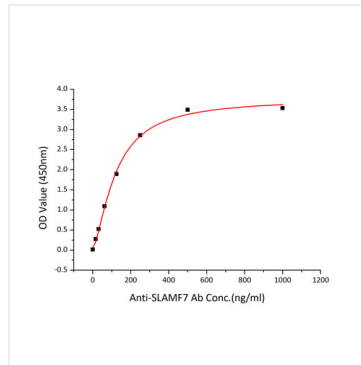
After reconstitution, the protein solution is stable at -20°C for 3 months, at 2-8°C for up to 1 week.

Avoid repeated freeze/thaw cycles.

Validation Data



Recombinant Human SLAMF7/CD319 Protein was determined by SDS-PAGE with Coomassie Blue, showing a band at 60-70 kDa.



Immobilized Recombinant Human SLAMF7 at 2 μ g/mL (100 μ L/well) can bind Anti-SLAMF7 antibody with a linear range of 60-150 ng/mL.