

# Recombinant Human IL-22RA2/IL22BP Protein

Catalog No.: RP00192 **Recombinant**

## Sequence Information

Species	Gene ID	Swiss Prot
Human	116379	Q969J5-2

### Tags

C-His

### Synonyms

IL22RA2;CRF2-10;CRF2-S1;CRF2X;IL-22BP;IL-22R-alpha-2;IL-22RA2;ZCYTOR16

## Product Information

Source	Purification
HEK293 cells	> 90% by SDS-PAGE.

Calculated MW	Observed MW
25.33 kDa	40-50 kDa

### Endotoxin

< 0.1 EU/μg of the protein by LAL method.

### Formulation

Lyophilized from a 0.22 μm filtered solution of PBS, pH 7.4. Contact us for customized product form or formulation.

### Reconstitution

Centrifuge the vial before opening. Reconstitute to a concentration of 0.1-0.5 mg/mL in sterile distilled water. Avoid vortex or vigorously pipetting the protein. For long term storage, it is recommended to add a carrier protein or stabilizer (e.g. 0.1% BSA, 5% HSA, 10% FBS or 5% Trehalose), and aliquot the reconstituted protein solution to minimize free-thaw cycles.

## Contact

☎ | 400-999-6126

✉ | [cn.market@abclonal.com.cn](mailto:cn.market@abclonal.com.cn)

🌐 | [www.abclonal.com.cn](http://www.abclonal.com.cn)

## Background

Interleukin 22 binding protein (IL-22BP), also known as CRF2-10, CRF2-X, and IL-22RA2, is a 35-45 kDa secreted glycoprotein in the type II cytokine receptor family (CRF). IL-22BP specifically binds to and inhibits interleukin 22 activity by blocking the interaction of interleukin 22 with its cell surface receptor. IL-22BP is produced by dendritic cells (DC), epithelial cells, activated B cells, and activated monocytes. It is constitutively expressed by DC but is down-regulated during local inflammation and in response to tissue damage. IL-22BP is critical for limiting IL-22 induced epithelial cell proliferation during wound healing, and its deficiency can enable uncontrolled proliferation and enhance tumor development.

## Basic Information

### Description

Recombinant Human IL-22RA2/IL22BP Protein is produced by HEK293 cells expression system. The target protein is expressed with sequence (Thr22-Pro231) of human IL-22BP/IL-22RA2 (Accession #NP\_851826.1) fused with a 6×His tag at the C-terminus.

### Bio-Activity

Measured by its binding ability in a functional ELISA. Immobilized recombinant Human IL22 at 2 μg/mL (100 μL/well) can bind recombinant Human IL22BP, the EC<sub>50</sub> of Human IL22BP is 10.78 ng/mL.

### Storage

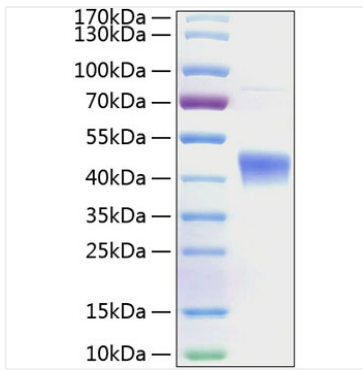
Store at -20°C. Store the lyophilized protein at -20°C to -80 °C up to 1 year from the date of receipt.

After reconstitution, the protein solution is stable at -20°C for 3 months, at 2-8°C for up to 1 week.

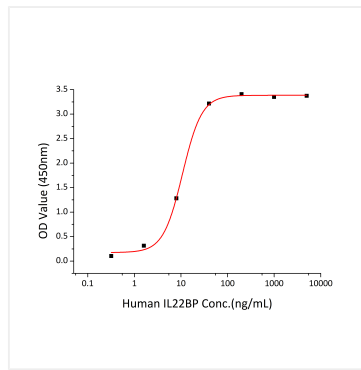
Avoid repeated freeze/thaw cycles.

## Validation Data

---



Recombinant Human IL-22RA2/IL22BP Protein was determined by SDS-PAGE with Coomassie Blue, showing a band at 40-50 kDa.



Immobilized recombinant Human IL22 at 2 $\mu$ g/mL (100 $\mu$ L/well) can bind recombinant Human IL22BP, the EC<sub>50</sub> of Human IL22BP is 10.78 ng/mL.