

Recombinant Human Serpin G1/Plasma protease C1 inhibitor Protein

Catalog No.: RP00197 **Recombinant**

Sequence Information

Species	Gene ID	Swiss Prot
Human	710	P05155

Tags

C-His

Synonyms

SERPING1; C1IN; C1INH; C1NH; HAE1; HAE2; serpin family G member 1; C1IN; C1INH; C1NH; HAE1; HAE2

Product Information

Source	Purification
HEK293 cells	> 95% by SDS-PAGE.

Calculated MW	Observed MW
55.99 kDa	90-100 kDa

Endotoxin

< 0.1 EU/μg of the protein by LAL method.

Formulation

Lyophilized from a 0.22 μm filtered solution of PBS, pH 7.4. Contact us for customized product form or formulation.

Reconstitution

Centrifuge the vial before opening. Reconstitute to a concentration of 0.1-0.5 mg/mL in sterile distilled water. Avoid vortex or vigorously pipetting the protein. For long term storage, it is recommended to add a carrier protein or stabilizer (e.g. 0.1% BSA, 5% HSA, 10% FBS or 5% Trehalose), and aliquot the reconstituted protein solution to minimize free-thaw cycles.

Contact

☎ | 400-999-6126

✉ | cn.market@abclonal.com.cn

🌐 | www.abclonal.com.cn

Background

Plasma protease C1 inhibitor, also known as C1-inhibiting factor, C1-INH, C1 esterase inhibitor, SERPING1 and C1IN, is a serine proteinase inhibitor (serpin). Serpin G1/C1 inhibitor is the physiological inhibitor of activated C1r and C1s and regulates activation of both the complement and contact systems. Deficiency of C1 inhibitor results in hereditary angioedema, which is characterized by recurrent episodes of localized angioedema of the skin, gastrointestinal mucosa or upper respiratory mucosa. C1 inhibitor may prove useful in a variety of other diseases including septic shock, reperfusion injury, hyperacute transplant rejection, traumatic and hemorrhagic shock, and the increased vascular permeability associated with thermal injury, interleukin-2 therapy and cardiopulmonary bypass.

Basic Information

Description

Recombinant Human SerpinG1/C1 inhibitor/C1IN Protein is produced by HEK293 cells expression system. The target protein is expressed with sequence (Met1-Ala500) of human SerpinG1/C1 inhibitor/C1IN (Accession #NP_000053.2) fused with a 6×His tag at the C-terminus.

Bio-Activity

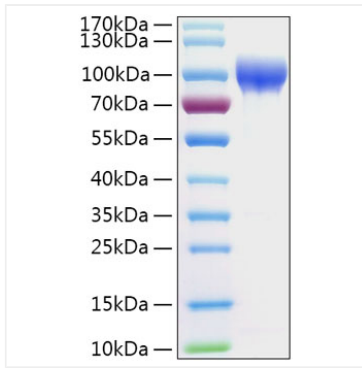
Storage

Store at -20°C. Store the lyophilized protein at -20°C to -80 °C up to 1 year from the date of receipt.

After reconstitution, the protein solution is stable at -20°C for 3 months, at 2-8°C for up to 1 week.

Avoid repeated freeze/thaw cycles.

Validation Data



Recombinant Human Serpin G1/Plasma protease C1 inhibitor Protein was determined by SDS-PAGE with Coomassie Blue, showing a band at 90-110 kDa.