

# Recombinant Human Podoplanin/PDPN Protein

Catalog No.: RP00208 **Recombinant**

## Sequence Information

Species	Gene ID	Swiss Prot
Human	10630	Q86YL7-3

### Tags

C-hFc&His

### Synonyms

AGGRUS; GP36; GP40; Gp38; HT1A-1; OTS8; PA2.26; T1A; T1A-2; T1A2; T11A; PDPN; AGGRUS; podoplanin; GP36; GP40; Gp38; HT1A-1; OTS8; PA2.26; T1A; T1A-2; T1A2; T11A

## Product Information

Source	Purification
HEK293 cells	> 95% by SDS-PAGE.

Calculated MW	Observed MW
37.31 kDa	50-65 kDa

### Endotoxin

< 0.1 EU/μg of the protein by LAL method.

### Formulation

Lyophilized from a 0.22 μm filtered solution of PBS, pH 7.4. Contact us for customized product form or formulation.

### Reconstitution

Centrifuge the vial before opening. Reconstitute to a concentration of 0.1-0.5 mg/mL in sterile distilled water. Avoid vortex or vigorously pipetting the protein. For long term storage, it is recommended to add a carrier protein or stabilizer (e.g. 0.1% BSA, 5% HSA, 10% FBS or 5% Trehalose), and aliquot the reconstituted protein solution to minimize freeze-thaw cycles.

## Contact

☎ | 400-999-6126

✉ | [cn.market@abclonal.com.cn](mailto:cn.market@abclonal.com.cn)

🌐 | [www.abclonal.com.cn](http://www.abclonal.com.cn)

## Background

Podoplanin, also known as glycoprotein 36 (gp36), PA2.26 antigen, T1-alpha (T1A), and agrus, is a 36 kDa type I transmembrane sialoglycoprotein and member of the Podoplanin family. PDPN is a mucin-type glycoprotein negatively charged by extensive O-glycosylation and a high content of sialic acid, which expresses the adhesive property. It is selectively expressed in lymphatic endothelium as well as lymphangiomas, Kaposi sarcomas, and in a subset of angiosarcomas with probable lymphatic differentiation. PDPN may contribute to form odontoblastic fiber or function as the anchorage to the tooth development and in proliferating epithelial cells of cervical loop and apical bud. The intensity of podoplanin expression is negatively correlated with the expression of CD34 and factor VIII. Podoplanin would be useful as a diagnostic marker for epithelioid hemangioendothelioma in liver tumors.

## Basic Information

### Description

Recombinant Human Podoplanin/PDPN Protein is produced by HEK293 cells expression system. The target protein is expressed with sequence (Glu97-Lys199) of human PDPN/Podoplanin (Accession #NP\_006465.3) fused with an Fc, 6×His tag at the C-terminus.

### Bio-Activity

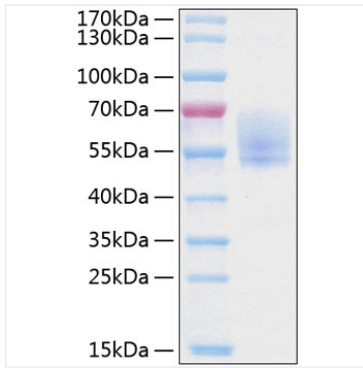
Measured by its binding ability in a functional ELISA. Immobilized Human CLEC-2 Protein at 5 μg/mL (100 μL/well) can bind Human Podoplanin with a linear range of 0.98-46 ng/mL.

### Storage

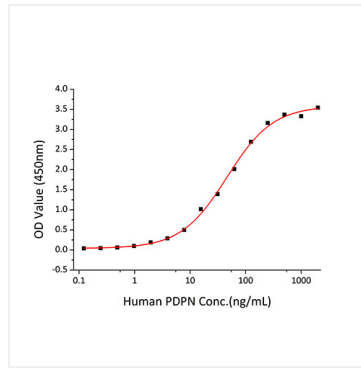
Store at -20°C. Store the lyophilized protein at -20°C to -80 °C up to 1 year from the date of receipt. After reconstitution, the protein solution is stable at -20°C for 3 months, at 2-8°C for up to 1 week. Avoid repeated freeze/thaw cycles.

## Validation Data

---



Recombinant Human Podoplanin/PDPN Protein was determined by SDS-PAGE with Coomassie Blue, showing a band at 50-65kDa.



Immobilized Human CLEC-2 Protein at 5  $\mu\text{g/mL}$  (100  $\mu\text{L}$ /well) can bind Human Podoplanin with a linear range of 0.98-46 ng/mL.