

Recombinant Human Lumican/LUM Protein

Catalog No.: RP00216 **Recombinant**

Sequence Information

Species	Gene ID	Swiss Prot
Human	4060	P51884

Tags

C-His

Synonyms

LDC; SLRR2D;LUM;SLRR2D;lumican

Product Information

Source	Purification
HEK293 cells	> 95% by SDS-PAGE.

Calculated MW	Observed MW
37.50 kDa	45-60 kDa

Endotoxin

< 0.1 EU/μg of the protein by LAL method.

Formulation

Lyophilized from a 0.22 μm filtered solution of PBS, pH 7.4. Contact us for customized product form or formulation.

Reconstitution

Centrifuge the vial before opening. Reconstitute to a concentration of 0.1-0.5 mg/mL in sterile distilled water. Avoid vortex or vigorously pipetting the protein. For long term storage, it is recommended to add a carrier protein or stabilizer (e.g. 0.1% BSA, 5% HSA, 10% FBS or 5% Trehalose), and aliquot the reconstituted protein solution to minimize free-thaw cycles.

Contact

 | 400-999-6126 | cn.market@abclonal.com.cn | www.abclonal.com.cn

Background

Lumican is a member of the family of small leucine-rich repeat proteoglycans (SLRPs) and the class II subfamily, which is a major component of the cornea, dermal, and muscle connective tissues. Lumican is the major keratan sulfate proteoglycan of the cornea but is also distributed in interstitial collagenous matrices throughout the body. Lumican regulates collagenous matrix assembly as a keratan sulfate proteoglycan in the cornea and is also present in the connective tissues of other organs and embryonic corneal stroma as a glycoprotein. Lumican may regulate collagen fibril organization and circumferential growth, corneal transparency, and epithelial cell migration and tissue repair. Lumican's over-expression has been reported in carcinoid tumor, breast, colorectal, neuroendocrine, uterine cervical and pancreatic cancers.

Basic Information

Description

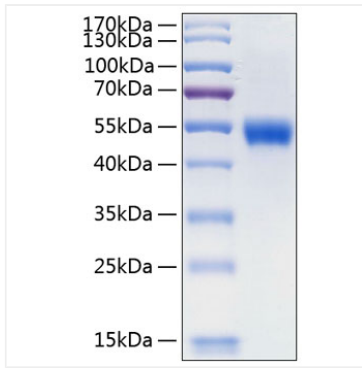
Recombinant Human Lumican/LUM Protein is produced by HEK293 cells expression system. The target protein is expressed with sequence (Gln19-Asn338) of human Lumican/LUM (Accession #NP_002336.1) fused with a 6×His tag at the C-terminus.

Bio-Activity

Storage

Store at -20°C. Store the lyophilized protein at -20°C to -80 °C up to 1 year from the date of receipt. After reconstitution, the protein solution is stable at -20°C for 3 months, at 2-8°C for up to 1 week. Avoid repeated freeze/thaw cycles.

Validation Data



Recombinant Human Lumican/LUM Protein was determined by SDS-PAGE with Coomassie Blue, showing a band at 45-60 kDa.