

Recombinant Human RGMA Protein

Catalog No.: RP00228 **Recombinant**

Sequence Information

Species	Gene ID	Swiss Prot
Human	56963	Q96B86

Tags

C-His

Synonyms

RGMA; RGM; repulsive guidance molecule A;RGM

Product Information

Source	Purification
HEK293 cells	> 90% by SDS-PAGE.

Calculated MW	Observed MW
42.41 kDa	25-40, 60 kDa

Endotoxin

< 0.1 EU/μg of the protein by LAL method.

Formulation

Lyophilized from a 0.22 μm filtered solution of PBS, pH 7.4. Contact us for customized product form or formulation.

Reconstitution

Centrifuge the vial before opening. Reconstitute to a concentration of 0.1-0.5 mg/mL in sterile distilled water. Avoid vortex or vigorously pipetting the protein. For long term storage, it is recommended to add a carrier protein or stabilizer (e.g. 0.1% BSA, 5% HSA, 10% FBS or 5% Trehalose), and aliquot the reconstituted protein solution to minimize free-thaw cycles.

Contact

 | 400-999-6126 | cn.market@abclonal.com.cn | www.abclonal.com.cn

Background

RGMA, also known as RGM domain family, member A, belongs to the RGM (repulsive guidance molecule) family whose members are membrane-associated glycoprotein. RGMA is a glycosylphosphatidylinositol-anchored glycoprotein that functions as an axon guidance protein in the developing and adult central nervous system. It helps guide Retinal Ganglion Cell (RGC) axons to the tectum in the midbrain. RGMA has been implicated to play an important role in the developing brain and in the scar tissue that forms after a brain injury. This protein may also function as a tumor suppressor in some cancers.

Basic Information

Description

Recombinant Human RGMA Protein is produced by HEK293 cells expression system. The target protein is expressed with sequence (Cys48-Gly422) of human RGMA (Accession #NP_064596.2) fused with a 6×His tag at the C-terminus.

Bio-Activity

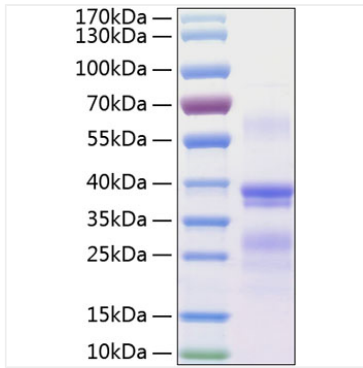
Storage

Store at -20°C. Store the lyophilized protein at -20°C to -80 °C up to 1 year from the date of receipt.

After reconstitution, the protein solution is stable at -20°C for 3 months, at 2-8°C for up to 1 week.

Avoid repeated freeze/thaw cycles.

Validation Data



Recombinant Human RGMA Protein was determined by SDS-PAGE with Coomassie Blue, showing bands at 25-37 kDa.