

# Recombinant Human IFN-lambda 2/IL-28A Protein

Catalog No.: RP00231 **Recombinant**

## Sequence Information

Species	Gene ID	Swiss Prot
Human	282616	Q8IZJ0

### Tags

C-His

### Synonyms

IFNL2;IL-28A;IL28A; IFNL2a; IFNL3a;  
IL-28A

## Product Information

Source	Purification
HEK293 cells	> 97% by SDS-PAGE.

### Endotoxin

&lt; 0.1 EU/μg of the protein by LAL method.

### Formulation

Lyophilized from a 0.22 μm filtered solution of PBS, pH 7.4. Contact us for customized product form or formulation.

### Reconstitution

Centrifuge the vial before opening. Reconstitute to a concentration of 0.1-0.5 mg/mL in sterile distilled water. Avoid vortex or vigorously pipetting the protein. For long term storage, it is recommended to add a carrier protein or stabilizer (e.g. 0.1% BSA, 5% HSA, 10% FBS or 5% Trehalose), and aliquot the reconstituted protein solution to minimize freeze-thaw cycles.

## Contact

 | 400-999-6126 | [cn.market@abclonal.com.cn](mailto:cn.market@abclonal.com.cn) | [www.abclonal.com.cn](http://www.abclonal.com.cn)

## Background

IL 28A (Interferon-lambda 2; IFN-lambda 2), IL-28B/IFN-lambda 3, and IL-29/IFN-lambda 1 are type III interferons which are distantly related to IL-10 family and type I IFN family cytokines. IL 28A, interleukin 28B (IL28B), and interleukin 29 (IL29) are three closely related cytokine which are expression can be induced by viral infection. In the liver, the IL-28A induced Th1 cytokine response contributes to inflammation in T cell mediated hepatitis. IL-28A additionally exhibits anti-tumor activity, in part by enhancing IL-12 dependent anti-tumor CTL responses in vivo. In contrast, it is up-regulated in invasive bladder cancer where it promotes tumor cell migration.

## Basic Information

### Description

Recombinant Human IFN-lambda 2/IL-28A Protein is produced by HEK293 cells expression system. The target protein is expressed with sequence (Val26-Val200) of human IL-28A/IL28A (Accession #NP\_742150.1) fused with a 6xHis tag at the C-terminus.

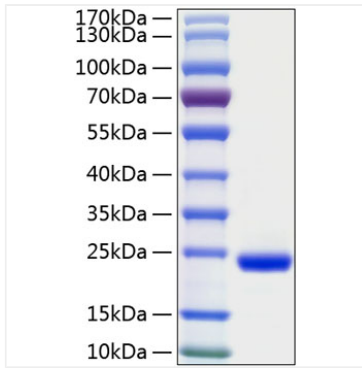
### Bio-Activity

### Storage

Store the lyophilized protein at -20°C to -80 °C for long term. After reconstitution, the protein solution is stable at -20 °C for 3 months, at 2-8 °C for up to 1 week. Avoid repeated freeze/thaw cycles.

## Validation Data

---



Recombinant Human IL-28A/IL28A Protein was determined by SDS-PAGE with Coomassie Blue, showing a band at 20-23 kDa.