

Recombinant Human IGFBP-1 Protein

Catalog No.: RP00237 **Recombinant**

Sequence Information

Species	Gene ID	Swiss Prot
Human	3484	P08833

Tags

C-His

Synonyms

AFBP; IBP1; IGF-BP25; PP12;
hIGFBP-1;IGFBP1;IBP1;IGF-
BP25;PP12;hIGFBP-1

Product Information

Source	Purification
HEK293 cells	> 97% by SDS-PAGE.

Endotoxin

< 0.1 EU/μg of the protein by LAL method.

Formulation

Lyophilized from a 0.22 μm filtered solution of PBS, pH 7.4. Contact us for customized product form or formulation.

Reconstitution

Centrifuge the vial before opening. Reconstitute to a concentration of 0.1-0.5 mg/mL in sterile distilled water. Avoid vortex or vigorously pipetting the protein. For long term storage, it is recommended to add a carrier protein or stabilizer (e.g. 0.1% BSA, 5% HSA, 10% FBS or 5% Trehalose), and aliquot the reconstituted protein solution to minimize freeze-thaw cycles.

Background

The superfamily of insulin-like growth factor (IGF) binding proteins include the six high-affinity IGF binding proteins (IGFBP) and at least four additional low-affinity binding proteins referred to as IGFBP related proteins (IGFBP-rP). All IGFBP superfamily members are cysteine-rich proteins with conserved cysteine residues, which are clustered in the amino- and carboxy-terminal thirds of the molecule. IGFBPs modulate the biological activities of IGF proteins. Some IGFBPs may also have intrinsic bioactivity that is independent of their ability to bind IGF proteins. Post-translational modifications of IGFBP, including glycosylation, phosphorylation and proteolysis, have been shown to modify the affinities of the binding proteins to IGF.

Basic Information

Description

Recombinant Human IGFBP-1 Protein is produced by HEK293 cells expression system. The target protein is expressed with sequence (Ala26-Asn259) of human IGFBP-1 (Accession #NP_000587.1) fused with a 6×His tag at the C-terminus.

Bio-Activity

Measured by its binding ability in a functional ELISA. Immobilized Recombinant Human IGFBP-1 at 5 μg/mL (100 μL/well) can bind Recombinant Human IGF1 with a linear range of 44-176 ng/mL.

Storage

Store the lyophilized protein at -20°C to -80 °C for long term.

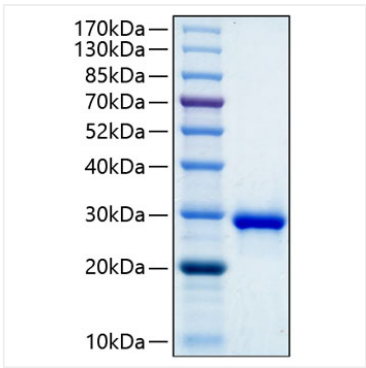
After reconstitution, the protein solution is stable at -20 °C for 3 months, at 2-8 °C for up to 1 week.

Avoid repeated freeze/thaw cycles.

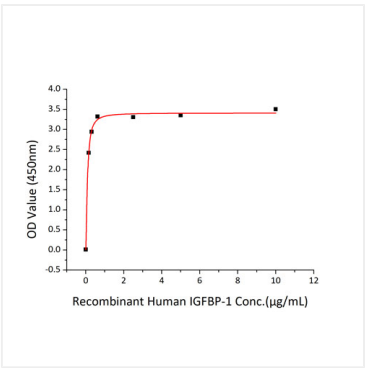
Contact

 | 400-999-6126 | cn.market@abclonal.com.cn | www.abclonal.com.cn

Validation Data



Recombinant Human IGFBP-1 Protein was determined by SDS-PAGE with Coomassie Blue, showing a band at 29 kDa.



Immobilized Recombinant Human IGFBP-1 at 5µg/mL (100 µL/well) can bind Recombinant Human IGF1 with a linear range of 44-176 ng/mL.