

# Recombinant Human CNTFR-alpha Protein

Catalog No.: RP00242 **Recombinant**

## Sequence Information

Species	Gene ID	Swiss Prot
Human	1271	P26992

### Tags

C-His

### Synonyms

CNTFR

## Product Information

Source	Purification
HEK293 cells	> 95% by SDS-PAGE.

Calculated MW	Observed MW
36.92 kDa	50-70 kDa

### Endotoxin

< 0.1 EU/μg of the protein by LAL method.

### Formulation

Lyophilized from a 0.22 μm filtered solution of PBS, pH 7.4. Contact us for customized product form or formulation.

### Reconstitution

Centrifuge the vial before opening. Reconstitute to a concentration of 0.1-0.5 mg/mL in sterile distilled water. Avoid vortex or vigorously pipetting the protein. For long term storage, it is recommended to add a carrier protein or stabilizer (e.g. 0.1% BSA, 5% HSA, 10% FBS or 5% Trehalose), and aliquot the reconstituted protein solution to minimize free-thaw cycles.

## Contact

 | 400-999-6126

 | [cn.market@abclonal.com.cn](mailto:cn.market@abclonal.com.cn)

 | [www.abclonal.com.cn](http://www.abclonal.com.cn)

## Background

CNTF is a member of the cytokine family. It is a polypeptide hormone that has functions in promoting neurotransmitter synthesis and neurite outgrowth in certain neuronal populations. Its actions appear to be restricted to the nervous system. Ciliary neurotrophic factor (CNTF) has biological effects through the activation of a multi-subunit receptor complex, consisting of an extracellular CNTF binding subunit (CNTFα) and two transmembrane signal transduction proteins: glycoprotein gp130 and LIF receptor. CNTF is considered as a potent survival factor of neurons and oligodendrocytes and may be relevant in reducing tissue destruction during inflammatory attacks. CNTF also is a survival factor for neurons of the peripheral sensory sympathetic and ciliary ganglia.

## Basic Information

### Description

Recombinant Human CNTFR-alpha Protein is produced by HEK293 cells expression system. The target protein is expressed with sequence (Gln 23 - Pro 346) of human CNTF R alpha (Accession #NP\_001833.1) fused with a 6×His tag at the C-terminus.

### Bio-Activity

Measured by its binding ability in a functional ELISA. Immobilized Recombinant Human CNTFR at 3 μg/mL (100 μL/well) can bind Recombinant Human CNTF with a linear range of 0.078-6.3 μg/mL.

### Storage

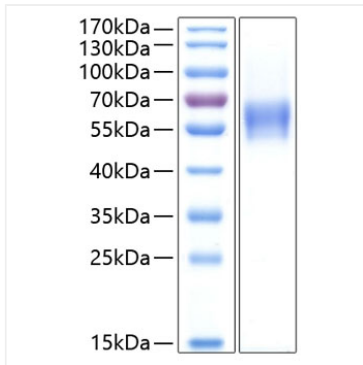
Store at -20°C. Store the lyophilized protein at -20°C to -80°C up to 1 year from the date of receipt.

After reconstitution, the protein solution is stable at -20°C for 3 months, at 2-8°C for up to 1 week.

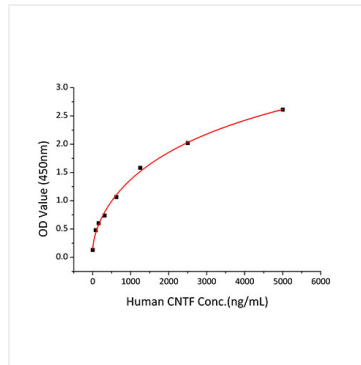
Avoid repeated freeze/thaw cycles.

## Validation Data

---



Recombinant Human CNTFR-alpha Protein was determined by SDS-PAGE with Coomassie Blue, showing a band at 50-70 kDa.



Immobilized Recombinant Human CNTFR at  $3\mu\text{g/mL}$  ( $100\mu\text{L/well}$ ) can bind Recombinant Human CNTF with a linear range of  $0.078\text{-}6.3\mu\text{g/mL}$ .