

Recombinant Human Chitinase-1/CHIT1 Protein

Catalog No.: RP00248 **Recombinant** **2 Publications**

Sequence Information

Species	Gene ID	Swiss Prot
Human	1118	AAI03696.1

Tags

C-His

Synonyms

CHIT1;CHI3;CHIT;CHITD

Product Information

Source	Purification
HEK293 cells	> 95% by SDS-PAGE.

Endotoxin

< 0.01 EU/μg of the protein by LAL method.

Formulation

Lyophilized from a 0.22 μm filtered solution of PBS, pH 7.4. Contact us for customized product form or formulation.

Reconstitution

Centrifuge the vial before opening. Reconstitute to a concentration of 0.1-0.5 mg/mL in sterile distilled water. Avoid vortex or vigorously pipetting the protein. For long term storage, it is recommended to add a carrier protein or stabilizer (e.g. 0.1% BSA, 5% HSA, 10% FBS or 5% Trehalose), and aliquot the reconstituted protein solution to minimize free-thaw cycles.

Contact

 | 400-999-6126

 | cn.market@abclonal.com.cn

 | www.abclonal.com.cn

Background

Basic Information

Description

Recombinant Human Chitinase-1/CHIT1 Protein is produced by HEK293 expression system. The target protein is expressed with sequence (Ala22-Asn466) of human CHIT1 (Accession #NP_003456) fused with a 6×His tag at the C-terminus.

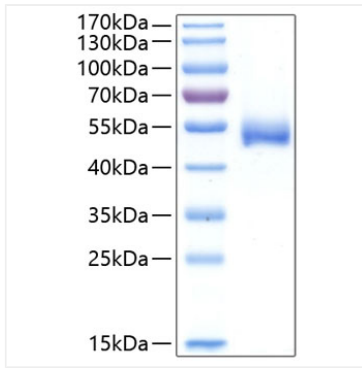
Bio-Activity

Measured by its ability to cleave 4-Methylumbelliferyl-beta -D-N,N',N''-triacetylchitotriose (4-MU-TACT). The specific activity is >43571 pmol/min/μg.

Storage

Store at -20°C. Store the lyophilized protein at -20°C to -80 °C up to 1 year from the date of receipt. After reconstitution, the protein solution is stable at -20°C for 3 months, at 2-8°C for up to 1 week. Avoid repeated freeze/thaw cycles.

Validation Data



Recombinant Human Chitinase-1/CHIT1
Protein was determined by SDS-PAGE with
Coomassie Blue, showing a band at 52 kDa.