

Recombinant Human L-Selectin/SELL/CD62L Protein

Catalog No.: RP00255 **Recombinant**

Sequence Information

Species	Gene ID	Swiss Prot
Human	6402	P14151-2

Tags

C-hFc&His

Synonyms

SELL;CD62L;LAM1;LECAM1;LEU8;LNHR;LSEL;LYAM1;PLNHR;TQ1

Product Information

Source	Purification
HEK293 cells	> 92% by SDS-PAGE.

Calculated MW	Observed MW
59.83 kDa	95-105 kDa

Endotoxin

< 0.1 EU/μg of the protein by LAL method.

Formulation

Lyophilized from a 0.22 μm filtered solution of PBS, pH 7.4. Contact us for customized product form or formulation.

Reconstitution

Centrifuge the vial before opening. Reconstitute to a concentration of 0.1-0.5 mg/mL in sterile distilled water. Avoid vortex or vigorously pipetting the protein. For long term storage, it is recommended to add a carrier protein or stabilizer (e.g. 0.1% BSA, 5% HSA, 10% FBS or 5% Trehalose), and aliquot the reconstituted protein solution to minimize free-thaw cycles.

Contact

 | 400-999-6126

 | cn.market@abclonal.com.cn

 | www.abclonal.com.cn

Background

Basic Information

Description

Recombinant Human L-Selectin/SELL/CD62L Protein is produced by HEK293 expression system. The target protein is expressed with sequence (Trp52-Asn345) of human L-Selectin/CD62L (Accession #NP_000646.2) fused with an Fc, 6xHis tag at the C-terminus.

Bio-Activity

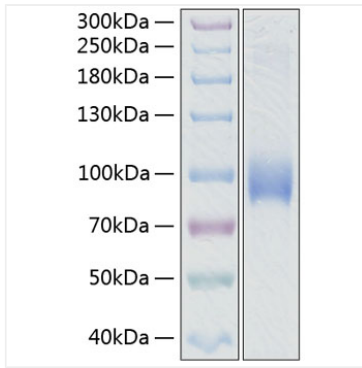
Storage

Store at -20°C. Store the lyophilized protein at -20°C to -80 °C up to 1 year from the date of receipt.

After reconstitution, the protein solution is stable at -20°C for 3 months, at 2-8°C for up to 1 week.

Avoid repeated freeze/thaw cycles.

Validation Data



Recombinant Human SELL/L-selectin/LAM-1/CD62L Protein was determined by SDS-PAGE with Coomassie Blue, showing a band at 95-105 kDa.