

Recombinant Human Carboxypeptidase E/CPE Protein

Catalog No.: RP00281 **Recombinant**

Sequence Information

Species	Gene ID	Swiss Prot
Human	1363	P16870-1

Tags

C-His

Synonyms

CPE;CPH

Product Information

Source	Purification
HEK293 cells	> 90% by SDS-PAGE.

Calculated MW	Observed MW
50.98 kDa	50-55 kDa

Endotoxin

< 0.1 EU/μg of the protein by LAL method.

Formulation

Lyophilized from a 0.22 μm filtered solution of PBS, pH 7.4. Contact us for customized product form or formulation.

Reconstitution

Centrifuge the vial before opening. Reconstitute to a concentration of 0.1-0.5 mg/mL in sterile distilled water. Avoid vortex or vigorously pipetting the protein. For long term storage, it is recommended to add a carrier protein or stabilizer (e.g. 0.1% BSA, 5% HSA, 10% FBS or 5% Trehalose), and aliquot the reconstituted protein solution to minimize freeze-thaw cycles.

Contact

 | 400-999-6126

 | cn.market@abclonal.com.cn

 | www.abclonal.com.cn

Background

Basic Information

Description

Recombinant Human Carboxypeptidase E/CPE Protein is produced by HEK293 cells expression system. The target protein is expressed with sequence (Met 1-Ser 453) of human Carboxypeptidase E (Accession #NP_001864) fused with a 6×His tag at the C-terminus.

Bio-Activity

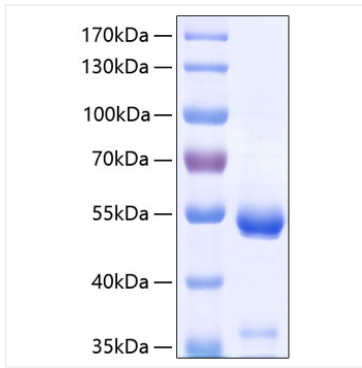
Storage

Store at -20°C. Store the lyophilized protein at -20°C to -80 °C up to 1 year from the date of receipt.

After reconstitution, the protein solution is stable at -20°C for 3 months, at 2-8°C for up to 1 week.

Avoid repeated freeze/thaw cycles.

Validation Data



Recombinant Human Carboxypeptidase E/CPE Protein was determined by SDS-PAGE with Coomassie Blue, showing a band at 54 kDa.