

Recombinant Human CCL23/Ck beta 8-1 Protein

Catalog No.: RP00317 **Recombinant**

Sequence Information

Species	Gene ID	Swiss Prot
Human	6368	P55773-1

Tags

No tag

Synonyms

CCL23;CK-BETA-8;CKb8;Ckb-8;Ckb-8-1;MIP-3;MIP3;MPIF-1;SCYA23;hmrp-2a

Product Information

Source	Purification
<i>E. coli</i>	> 95% by SDS-PAGE.

Calculated MW	Observed MW
11.34 kDa	15-20 kDa

Endotoxin

< 1 EU/μg of the protein by LAL method.

Formulation

Lyophilized from a 0.2 μm filtered solution of 20 mM PB, 250 mM NaCl, pH 7.2.

Reconstitution

Centrifuge the vial before opening. Reconstitute to a concentration of 0.1-0.5 mg/mL in sterile distilled water. Avoid vortex or vigorously pipetting the protein. For long term storage, it is recommended to add a carrier protein or stabilizer (e.g. 0.1% BSA, 5% HSA, 10% FBS or 5% Trehalose), and aliquot the reconstituted protein solution to minimize free-thaw cycles.

Contact

☎ | 400-999-6126

✉ | cn.market@abclonal.com.cn

🌐 | www.abclonal.com.cn

Background

Chemokines form a superfamily of secreted proteins involved in immunoregulatory and inflammatory processes. The superfamily is divided into four subfamilies based on the arrangement of the N-terminal cysteine residues of the mature peptide. This chemokine, a member of the CC subfamily, displays chemotactic activity on resting T lymphocytes and monocytes, lower activity on neutrophils and no activity on activated T lymphocytes. The protein is also a strong suppressor of colony formation by a multipotential hematopoietic progenitor cell line. In addition, the product of This protein is a potent agonist of the chemokine (C-C motif) receptor 1. Alternative splicing results in multiple transcript variants that encode different isoforms.

Basic Information

Description

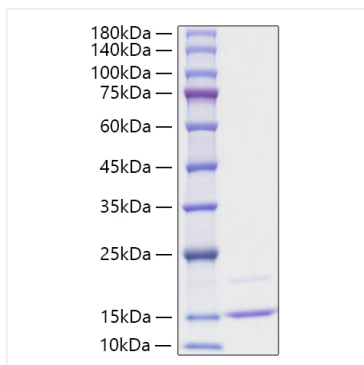
Recombinant Human CCL23/CK beta 8-1 Protein is produced by *E. coli* expression system. The target protein is expressed with sequence (Arg22-Asn120) of human CCL23/CK beta 8-1 (Accession #P55773) fused with no additional amino acid.

Bio-Activity

Storage

Store at -20°C. Store the lyophilized protein at -20°C to -80 °C up to 1 year from the date of receipt. After reconstitution, the protein solution is stable at -20°C for 3 months, at 2-8°C for up to 1 week. Avoid repeated freeze/thaw cycles.

Validation Data



Recombinant protein Human CCL23/Ck beta 8-1 was determined by SDS-PAGE under reducing conditions with Coomassie Blue, showing a band at 15-25 kDa.