

Recombinant Human B7-H1/PD-L1/CD274 Protein

Catalog No.: RP00331 **Recombinant**

Sequence Information

Species	Gene ID	Swiss Prot
Human	29126	Q9NZQ7-1

Tags

C-hFc

Synonyms

CD274; PDL1; PD-L1; PD-L1B7 homolog 1; B7-H; B7H1; B7-H1; PDCD1L1; PDCD1LG1

Product Information

Source	Purification
HEK293 cells	> 95% by SDS-PAGE > 95% by HPLC

Calculated MW	Observed MW
52 kDa	68-80 kDa

Endotoxin

< 1 EU/μg of the protein by LAL method

Formulation

Lyophilized from 0.22 μm filtered solution in PBS (pH 7.4). Normally 8% trehalose is added as protectant before lyophilization.

Reconstitution

Centrifuge the vial before opening. Reconstitute to a concentration of 0.1-0.5 mg/mL in sterile distilled water. Avoid vortex or vigorously pipetting the protein. For long term storage, it is recommended to add a carrier protein or stabilizer (e.g. 0.1% BSA, 5% HSA, 10% FBS or 5% Trehalose), and aliquot the reconstituted protein solution to minimize free-thaw cycles.

Contact

☎ | 400-999-6126

✉ | cn.market@abclonal.com.cn

🌐 | www.abclonal.com.cn

Background

B7-H1, also known as PD-L1 and CD274, is an approximately 65 kDa transmembrane glycoprotein in the B7 family of immune regulatory molecules. PD-L1 has been identified as the ligand for the immunoinhibitory receptor programmed death-1 (PD1/PDCD1) and has been demonstrated to play a role in the regulation of immune responses and peripheral tolerance.

Basic Information

Description

Recombinant Human PD-L1/B7-H1 Protein is produced by HEK293 cells expression system. The target protein is expressed with sequence (Phe19-Arg238) of Human PD-L1/B7-H1 (Accession #Q9NZQ7-1) fused with a C-hFc tag at the C-terminus.

Bio-Activity

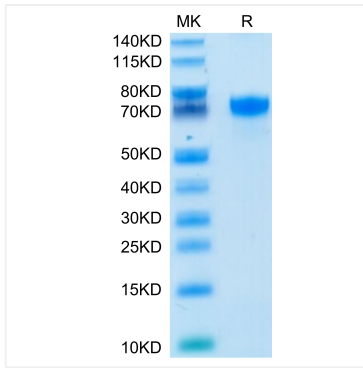
Storage

Store at -20°C. Store the lyophilized protein at -20°C to -80 °C up to 1 year from the date of receipt.

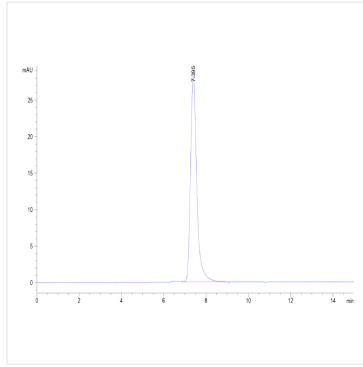
After reconstitution, the protein solution is stable at -20°C for 3 months, at 2-8°C for up to 1 week.

Avoid repeated freeze/thaw cycles.

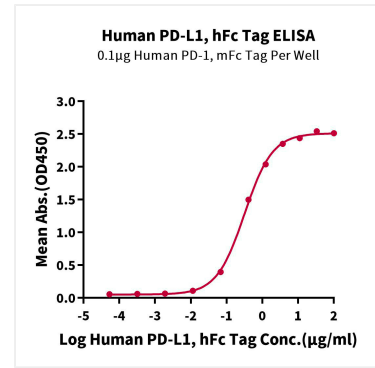
Validation Data



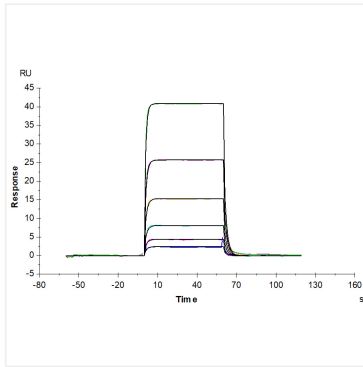
Human PD-L1 on Tris-Bis PAGE under reduced condition. The purity is greater than 95%.



The purity of Human PD-L1 is greater than 95% as determined by SEC-HPLC.



Immobilized Human PD-1, mFc Tag at 1 µg/mL (100 µL/well) on the plate. Dose response curve for Human PD-L1, hFc Tag with the EC_{50} of 0.17 µg/mL determined by ELISA (QC Test).



Human PD-L1, hFc Tag captured on CM5 Chip via Protein A can bind Human PD-1, His Tag with an affinity constant of 2.20 µM as determined in SPR assay (Biacore T200).