

Recombinant Human NKp46/NCR1/CD335 Protein

Catalog No.: RP00349 **Recombinant**

Sequence Information

Species	Gene ID	Swiss Prot
Human	9437	O76036-1

Tags

C-mFc

Synonyms

CD335; Ly94; NCR1; NKp46; MAR-1; NKP46FLJ99094

Product Information

Source	Purification
HEK293 cells	> 95% by SDS-PAGE > 95% by HPLC

Endotoxin

< 1 EU/μg of the protein by LAL method

Formulation

Lyophilized from 0.22 μm filtered solution in PBS (pH 7.4). Normally 8% trehalose is added as protectant before lyophilization.

Reconstitution

Centrifuge the vial before opening. Reconstitute to a concentration of 0.1-0.5 mg/mL in sterile distilled water. Avoid vortex or vigorously pipetting the protein. For long term storage, it is recommended to add a carrier protein or stabilizer (e.g. 0.1% BSA, 5% HSA, 10% FBS or 5% Trehalose), and aliquot the reconstituted protein solution to minimize freeze-thaw cycles.

Contact

 | 400-999-6126

 | cn.market@abclonal.com.cn

 | www.abclonal.com.cn

Background

NKp46, along with NKp30 and NKp44, are activating receptors that have been collectively termed the natural cytotoxicity receptors (NCR). These receptors lack significant sequence homology to one another. They are expressed almost exclusively by NK cells and play a major role in triggering some of the key lytic activities of NK cells.

Basic Information

Description

Recombinant Human NKp46/NCR1/CD335 Protein is produced by HEK293 cells expression system. The target protein is expressed with sequence (Gln22-Asn255) of Human NKp46/NCR1/CD335 (Accession #O76036-1) fused with a C-mFc tag at the C-terminus.

Bio-Activity

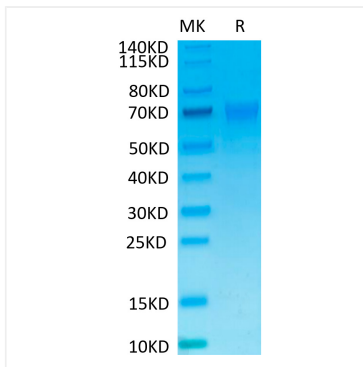
Storage

Store the lyophilized protein at -20°C to -80°C for 12 months.

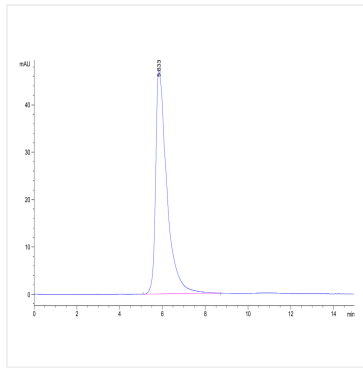
After reconstitution, the protein solution is stable at -20°C for 3 months, at 2-8°C for up to 1 week.

Avoid repeated freeze/thaw cycles.

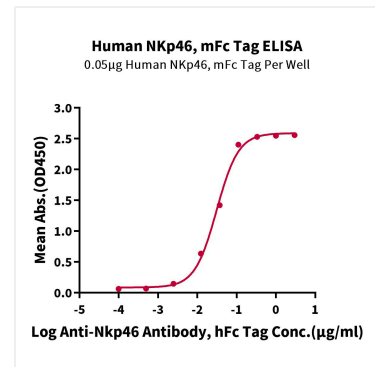
Validation Data



Human NKp46 on Tris-Bis PAGE under reduced condition. The purity is greater than 95%.



The purity of Human NKp46 is greater than 95% as determined by SEC-HPLC.



Immobilized Human NKp46, mFc Tag at 0.5 µg/mL (100 µL/well) on the plate. Dose response curve for Anti-Nkp46 Antibody, hFc Tag with the EC_{50} of 30.9ng/mL determined by ELISA.