

Catalog No.: RP00362 **Recombinant**

Species	Gene ID	Swiss Prot
Human	7293	P43489

C-hFc

CD134; OX40; OX40L receptor; TNFRSF4;
ACT-135; Ly-70; OX40 homologue;
TXGP1L; IMD16

Source	Purification
HEK293 cells	≥ 95 % as determined by SDS-PAGE

Calculated MW	Observed MW
46.8 kDa	70-78 kDa

< 1 EU/μg of the protein by LAL method.

Lyophilized from 0.22 μm filtered solution in PBS (pH 7.4). Normally 8% trehalose is added as protectant before lyophilization.

Centrifuge the vial before opening. Reconstitute to a concentration of 0.1-0.5 mg/mL in sterile distilled water. Avoid vortex or vigorously pipetting the protein. For long term storage, it is recommended to add a carrier protein or stabilizer (e.g. 0.1% BSA, 5% HSA, 10% FBS or 5% Trehalose), and aliquot the reconstituted protein solution to minimize freeze-thaw cycles.

Tumor necrosis factor receptor superfamily, member 4 (TNFRSF4), also known as CD134 and OX40 receptor. OX40 is a secondary co-stimulatory immune checkpoint molecule, expressed after 24 to 72 hours following activation; its ligand, OX40L, is also not expressed on resting antigen presenting cells, but is following their activation.

Recombinant Human TNFRSF4/OX40/CD134 Protein is produced by HEK293 cells expression system. The target protein is expressed with sequence (Leu29-Ala216) of Human OX40/TNFRSF4/CD134 (Accession #P43489) fused with a C-hFc tag at the C-terminus.

The product is shipped at ambient temperature. Upon receipt, store it immediately at the temperature recommended below.

Avoid repeated freeze/thaw cycles.

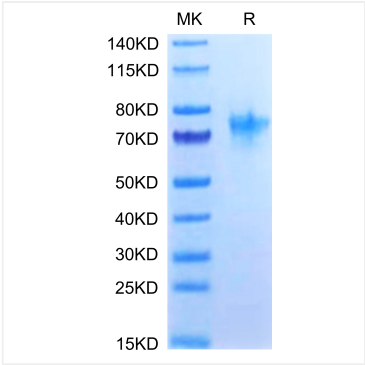
For your safety and health, please wear a lab coat and disposable gloves for handling.

 | 400-999-6126

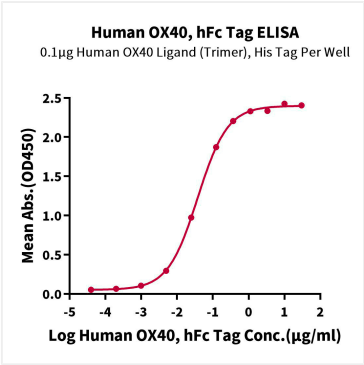
✉ | cn.market@abclonal.com.cn

 | www.abclonal.com.cn

Validation Data



Recombinant Human TNFRSF4/OX40/CD134 Protein was determined by Tris-Bis PAGE under reducing conditions.



Immobilized Human OX40 Ligand Trimer, His Tag at 1 µg/mL (100 µL/well) on the plate. Dose response curve for Human OX40, hFc Tag with the EC₅₀ of 37.7ng/mL determined by ELISA.