

Recombinant Human PVR/CD155 Protein

Catalog No.: RP00387 **Recombinant**

Sequence Information

Species	Gene ID	Swiss Prot
Human	5817	P15151-1

Tags

C-hFc

Synonyms

CD155; HVED; NECL5; Necl-5; nectin-like 5; PVR; PVS; Tage4; PVSFLJ25946; FLJ25946

Product Information

Source	Purification
HEK293 cells	> 95% by SDS-PAGE

Endotoxin

< 1 EU/μg of the protein by LAL method

Formulation

Lyophilized from 0.22 μm filtered solution in PBS (pH 7.4). Normally 8% trehalose is added as protectant before lyophilization.

Reconstitution

Centrifuge the vial before opening. Reconstitute to a concentration of 0.1-0.5 mg/mL in sterile distilled water. Avoid vortex or vigorously pipetting the protein. For long term storage, it is recommended to add a carrier protein or stabilizer (e.g. 0.1% BSA, 5% HSA, 10% FBS or 5% Trehalose), and aliquot the reconstituted protein solution to minimize free-thaw cycles.

Contact

 | 400-999-6126

 | cn.market@abclonal.com.cn

 | www.abclonal.com.cn

Background

CD155 is a cell surface adhesion molecule functioning in tumor cell migration, invasion, and metastasis, and not surprisingly, is also designated as a common tumor-associated antigen. CD155 is also recognized by NK cells to induce their cytotoxicity. CD155 is also commonly referred to as the "poliovirus receptor," or PVR.

Basic Information

Description

Recombinant Human PVR/CD155 Protein is produced by HEK293 cells expression system. The target protein is expressed with sequence (Trp21-Asn343) of HumanPVR/CD155 (Accession #P15151-1) fused with a C-hFc tag at the C-terminus.

Bio-Activity

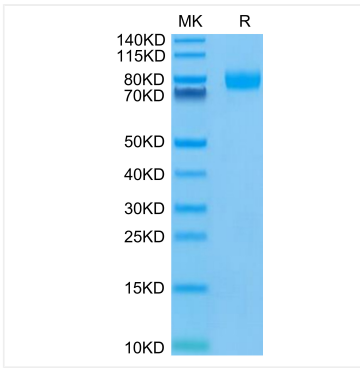
Storage

Store at -20°C. Store the lyophilized protein at -20°C to -80 °C up to 1 year from the date of receipt.

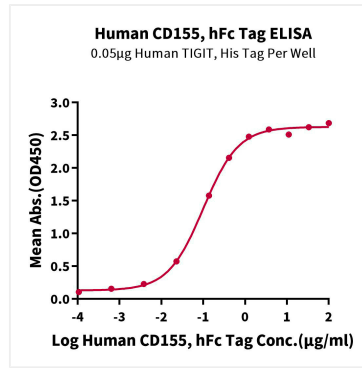
After reconstitution, the protein solution is stable at -20°C for 3 months, at 2-8°C for up to 1 week.

Avoid repeated freeze/thaw cycles.

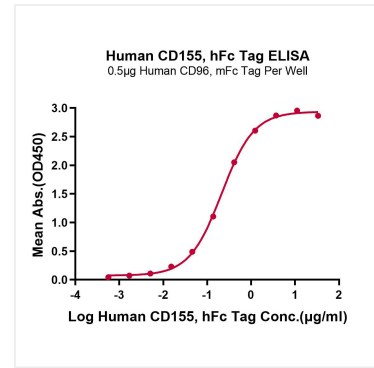
Validation Data



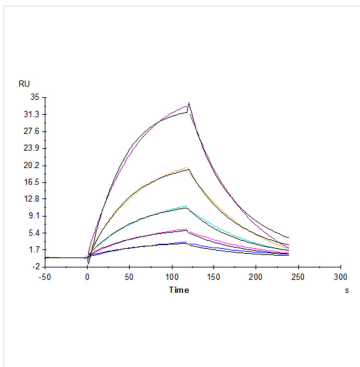
Human CD155 on Tris-Bis PAGE under reduced condition. The purity is greater than 95%.



Immobilized Human TIGIT, His Tag at 0.5 µg/mL (100 µL/Well) on the plate. Dose response curve for Human CD155, hFc Tag with the EC₅₀ of 0.1 µg/mL determined by ELISA (QC Test).



Immobilized Human CD96, mFc Tag at 5 µg/mL (100 µL/Well) on the plate. Dose response curve for Human CD155, hFc Tag with the EC₅₀ of 0.21 µg/mL determined by ELISA.



Human CD155, hFc Tag captured on CM5 Chip via Protein A can bind Human CD96, His Tag with an affinity constant of 0.958 µM as determined in SPR assay (Biacore T200).