

Recombinant Human PD-1/PDCD1/CD279 Protein

Catalog No.: RP00399 **Recombinant**

Sequence Information

Species	Gene ID	Swiss Prot
Human	5133	Q15116-1

Tags

C-hFc

Synonyms

PDCD1; PD1; CD279; SLEB2; PD-1

Product Information

Source	Purification
HEK293 cells	> 95% by SDS-PAGE > 95% by HPLC

Calculated MW	Observed MW
42.6 kDa	65-72 kDa

Endotoxin

< 1 EU/μg of the protein by LAL method

Formulation

Lyophilized from 0.22 μm filtered solution in PBS (pH 7.4). Normally 8% trehalose is added as protectant before lyophilization.

Reconstitution

Centrifuge the vial before opening. Reconstitute to a concentration of 0.1-0.5 mg/mL in sterile distilled water. Avoid vortex or vigorously pipetting the protein. For long term storage, it is recommended to add a carrier protein or stabilizer (e.g. 0.1% BSA, 5% HSA, 10% FBS or 5% Trehalose), and aliquot the reconstituted protein solution to minimize free-thaw cycles.

Contact

☎ | 400-999-6126

✉ | cn.market@abclonal.com.cn

🌐 | www.abclonal.com.cn

Background

Programmed cell death protein 1, also known as PD-1 and CD279, is a protein found on the surface of cells that has a role in regulating the immune system's response to the cells of the human body by down-regulating the immune system and promoting self tolerance by suppressing T cell inflammatory activity.

Basic Information

Description

Recombinant Human PD-1/PDCD1/CD279 Protein is produced by HEK293 cells expression system. The target protein is expressed with sequence (Leu25-Gln167) of Human PD-1/PDCD1 (Accession #Q15116-1) fused with a C-hFc tag at the C-terminus.

Bio-Activity

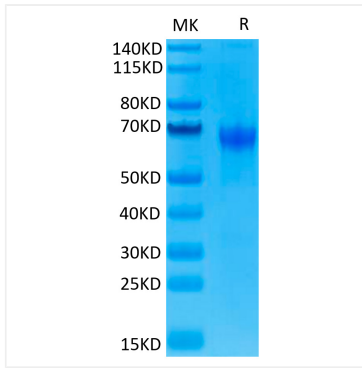
Storage

Store at -20°C. Store the lyophilized protein at -20°C to -80 °C up to 1 year from the date of receipt.

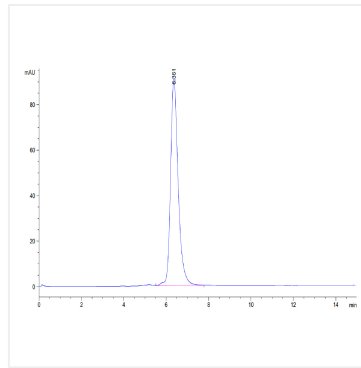
After reconstitution, the protein solution is stable at -20°C for 3 months, at 2-8°C for up to 1 week.

Avoid repeated freeze/thaw cycles.

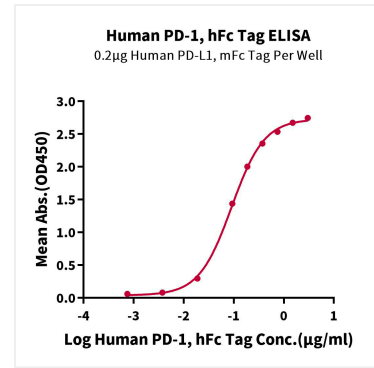
Validation Data



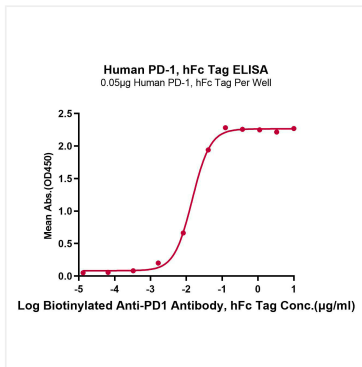
Human PD-1 on Tris-Bis PAGE under reduced. The purity is greater than 95%.



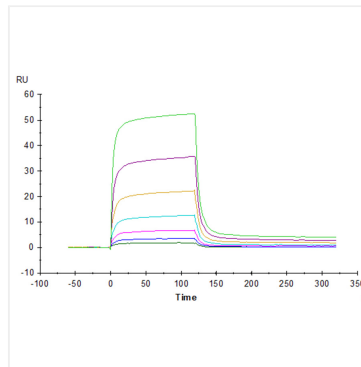
The purity of Human PD-1 is greater than 95% as determined by SEC-HPLC.



Immobilized Human PD-L1, mFc Tag at 2 µg/mL (100 µL/well) on the plate. Dose response curve for Human PD-1, hFc Tag with the EC_{50} of 90.5ng/mL determined by ELISA (QC Test).



Immobilized Human PD-1, hFc Tag at 0.5 µg/mL (100 µL/Well). Dose response curve for Biotinylated Anti-PD1 Antibody, hFc Tag with the EC_{50} of 14.6ng/mL determined by ELISA.



Human PD-1, hFc Tag captured on CM5 Chip via Protein A can bind Biotinylated Human PD-L2, His-Avi Tag with an affinity constant of 0.344 µM as determined in SPR assay (Biacore T200).