

Recombinant Human CD3E&CD3G Protein

Catalog No.: RP00415 **Recombinant**

Sequence Information

Species	Gene ID	Swiss Prot
Human	916&917	P07766(CD3E)&P09693(CD3G)

Tags

C-His

Synonyms

CD3; CD3G; CD3g; T3G; CD3e; CD3E; CD3 epsilon&CD3 gamma; CD3E&CD3G

Product Information

Source	Purification
HEK293 cells	> 95% by SDS-PAGE > 95% by HPLC

Endotoxin

< 1 EU/μg of the protein by LAL method

Formulation

Lyophilized from 0.22 μm filtered solution in PBS (pH 7.4). Normally 8% trehalose is added as protectant before lyophilization.

Reconstitution

Centrifuge the vial before opening. Reconstitute to a concentration of 0.1-0.5 mg/mL in sterile distilled water. Avoid vortex or vigorously pipetting the protein. For long term storage, it is recommended to add a carrier protein or stabilizer (e.g. 0.1% BSA, 5% HSA, 10% FBS or 5% Trehalose), and aliquot the reconstituted protein solution to minimize free-thaw cycles.

Contact

☎ | 400-999-6126

✉ | cn.market@abclonal.com.cn

🌐 | www.abclonal.com.cn

Background

T-cell surface glycoprotein CD3 epsilon & CD3 gamma chain, also known as CD3E & CD3G, are single-pass type I membrane proteins. When antigen presenting cells (APCs) activate T-cell receptor (TCR), TCR-mediated signals are transmitted across the cell membrane by the CD3 chains CD3D, CD3E, CD3G and CD3Z. All CD3 chains contain immunoreceptor tyrosine-based activation motifs (ITAMs) in their cytoplasmic domain.

Basic Information

Description

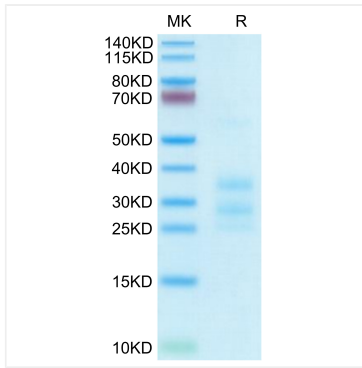
Recombinant Human CD3E&CD3G/CD3 epsilon&CD3 gamma Protein is produced by HEK293 cells expression system. The target protein is expressed with sequence (Asp23-Glu120(CD3E) & Gln23-Asn106(CD3G)) of Human CD3E&CD3G/CD3 epsilon&CD3 gamma (Accession #P07766(CD3E)&P09693(CD3G)) fused with a C-His tag at the C-terminus.

Bio-Activity

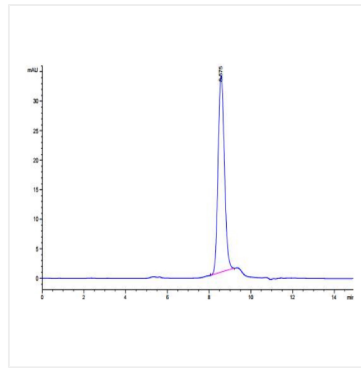
Storage

Store at -20°C. Store the lyophilized protein at -20°C to -80 °C up to 1 year from the date of receipt. After reconstitution, the protein solution is stable at -20°C for 3 months, at 2-8°C for up to 1 week. Avoid repeated freeze/thaw cycles.

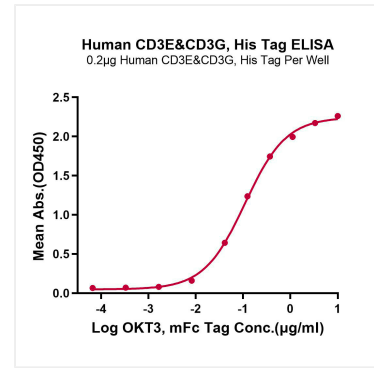
Validation Data



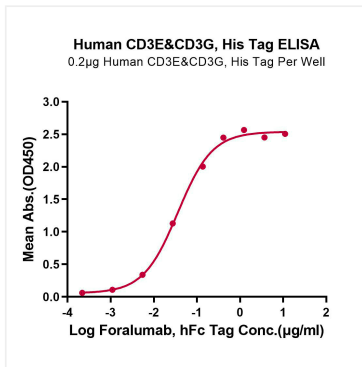
Human CD3E&CD3G on Tris-Bis PAGE under reduced condition. The purity is greater than 95%.



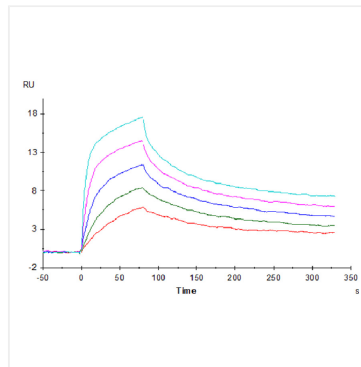
The purity of Human CD3E&CD3G is greater than 95% as determined by SEC-HPLC.



Immobilized Human CD3E&CD3G, His Tag at 2 µg/mL (100 µL/Well) on the plate. Dose response curve for OKT3, mFc Tag with the EC₅₀ of 110.2ng/mL determined by ELISA (QC Test).



Immobilized Human CD3E&CD3G, His Tag at 2 µg/mL (100 µL/Well) on the plate. Dose response curve for Foralumab, hFc Tag with the EC₅₀ of 36.2ng/mL determined by ELISA.



Human CD3E&CD3G, His Tag captured on CM5 Chip via Anti-His Antibody can bind OKT3, mFc Tag with an affinity constant of 0.22nM as determined in SPR assay (Biacore T200).