

# Recombinant Human IL-15RA/IL-15 R alpha/CD215 Protein

Catalog No.: RP00437 **Recombinant**

## Sequence Information

Species	Gene ID	Swiss Prot
Human	3601	Q13261-1

### Tags

C-hFc

### Synonyms

IL-15 R alpha; CD215; IL-15RA;  
MGC104179

## Product Information

Source	Purification
HEK293 cells	> 95% by SDS-PAGE > 95% by HPLC

### Endotoxin

< 1 EU/μg of the protein by LAL method

### Formulation

Lyophilized from 0.22 μm filtered solution in PBS (pH 7.4). Normally 8% trehalose is added as protectant before lyophilization.

### Reconstitution

Centrifuge the vial before opening. Reconstitute to a concentration of 0.1-0.5 mg/mL in sterile distilled water. Avoid vortex or vigorously pipetting the protein. For long term storage, it is recommended to add a carrier protein or stabilizer (e.g. 0.1% BSA, 5% HSA, 10% FBS or 5% Trehalose), and aliquot the reconstituted protein solution to minimize free-thaw cycles.

## Contact

☎ | 400-999-6126

✉ | [cn.market@abclonal.com.cn](mailto:cn.market@abclonal.com.cn)

🌐 | [www.abclonal.com.cn](http://www.abclonal.com.cn)

## Background

Interleukin-15 receptor alpha (IL-15R alpha) is a high affinity IL-15 binding protein that is crucial for mediating IL-15 functions such as memory CD8 T cell proliferation and NK, NK/T cell, and intestinal intraepithelial lymphocyte development.

## Basic Information

### Description

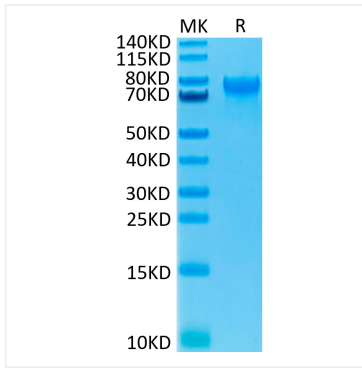
Recombinant Human IL-15RA/IL-15 R alpha/CD215 Protein is produced by HEK293 cells expression system. The target protein is expressed with sequence (Ile31-Thr205) of Human IL-15RA/IL-15 R alpha/CD215 (Accession #Q13261-1) fused with a C-hFc tag at the C-terminus.

### Bio-Activity

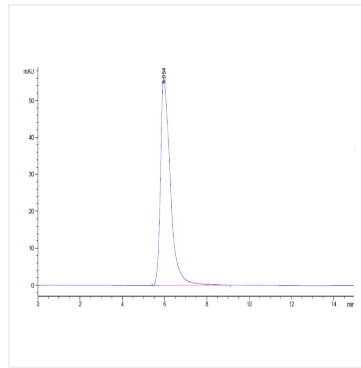
### Storage

Store the lyophilized protein at -20°C to -80°C for 12 months. After reconstitution, the protein solution is stable at -20°C for 3 months, at 2-8°C for up to 1 week. Avoid repeated freeze/thaw cycles.

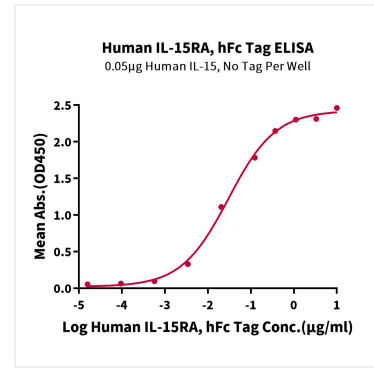
## Validation Data



Human IL-15RA on Tris-Bis PAGE under reduced condition. The purity is greater than 95%.



The purity of Human IL-15RA is greater than 95% as determined by SEC-HPLC.



Immobilized Human IL-15, No Tag at 0.5 µg/mL (100 µL/Well) on the plate. Dose response curve for Human IL-15RA, hFc Tag with the  $EC_{50}$  of 30.2ng/mL determined by ELISA.