

Recombinant Human Fc epsilon RI alpha/FCER1a Protein

Catalog No.: RP00489 **Recombinant**

Sequence Information

| Species | Gene ID | Swiss Prot |
|---------|---------|------------|
| Human | 2205 | P12319-1 |

Tags

C-hFc

Synonyms

Fc-epsilon RI-alpha; FcERI; FCER1A; FCE1A

Product Information

| Source | Purification |
|--------------|---------------------------------|
| HEK293 cells | > 95% by SDS-PAGE > 95% by HPLC |

Endotoxin

< 1 EU/μg of the protein by LAL method


Formulation

Lyophilized from 0.22 μm filtered solution in PBS (pH 7.4). Normally 8% trehalose is added as protectant before lyophilization.

Reconstitution

Centrifuge the vial before opening. Reconstitute to a concentration of 0.1-0.5 mg/mL in sterile distilled water. Avoid vortex or vigorously pipetting the protein. For long term storage, it is recommended to add a carrier protein or stabilizer (e.g. 0.1% BSA, 5% HSA, 10% FBS or 5% Trehalose), and aliquot the reconstituted protein solution to minimize free-thaw cycles.

Contact

 | 400-999-6126

 | cn.market@abclonal.com.cn

 | www.abclonal.com.cn

Background

Known susceptibility genes to atopy and asthma have been identified by linkage or associations with clinical phenotypes, including total serum IgE levels. IgE-mediated sensitivity reactions require a high-affinity IgE receptor (FcεRI), which immobilizes the immunoglobulin on the surface of the effector cells, mostly mast cells and basophils. Similarly to the previously investigated beta subunit of the receptor, FCER1A is a good candidate for a quantitative trait locus (QTL) in allergic diseases, and appears to participate in the systemic regulation of IgE levels.

Basic Information

Description

Recombinant Human Fc epsilon RI alpha/FCER1a Protein is produced by HEK293 cells expression system. The target protein is expressed with sequence (Val26-Gln205) of Human Fc epsilon RI alpha/FCER1a (Accession #P12319-1) fused with a C-hFc tag at the C-terminus.

Bio-Activity

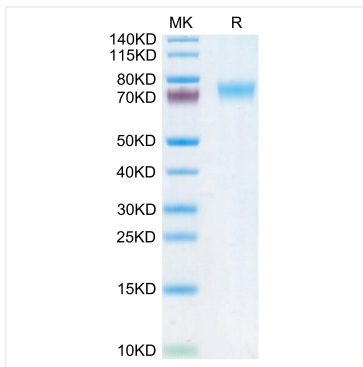
Storage

Store the lyophilized protein at -20°C to -80°C for 12 months.

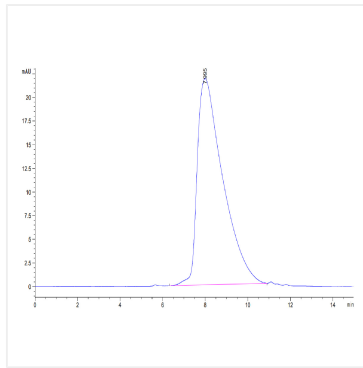
After reconstitution, the protein solution is stable at -20°C for 3 months, at 2-8°C for up to 1 week.

Avoid repeated freeze/thaw cycles.

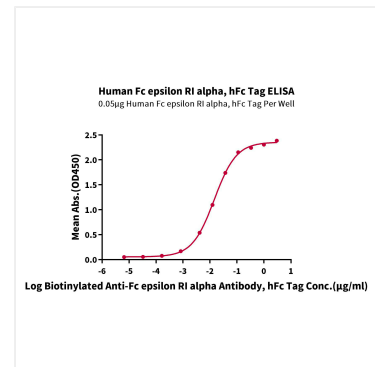
Validation Data



Human Fc epsilon RI alpha on Tris-Bis PAGE under reduced condition. The purity is greater than 95%.



The purity of Human Fc epsilon RI alpha is greater than 95% as determined by SEC-HPLC.



Immobilized Human Fc epsilon RI alpha, hFc Tag at 0.5 µg/mL (100 µL/Well) on the plate. Dose response curve for Biotinylated Anti-Fc epsilon RI alpha Antibody, hFc Tag with the EC₅₀ 14.5ng/mL determined by ELISA.