

Recombinant Human CSF2RA/GM-CSF R alpha/CD116 Protein

Catalog No.: RP00507 **Recombinant**

Sequence Information

Species	Gene ID	Swiss Prot
Human	1438	P15509-1

Tags

C-His

Synonyms

GM-CSF-R-alpha; GMCSFR-alpha; GMR-alpha; CSF2R; CSF2RY; CSF2RA; CDw116; CD116; CSF2RAX; CSF2RAY; CSF2RX; GMCSFR; GMR; SMDP4

Product Information

Source	Purification
HEK293 cells	≥ 95 % as determined by SDS-PAGE; ≥ 95 % as determined by HPLC.

Calculated MW	Observed MW
35.3 kDa	60-70 kDa

Endotoxin

< 1 EU/μg of the protein by LAL method.

Formulation

Lyophilized from 0.22 μm filtered solution in PBS (pH 7.4). Normally 8% trehalose is added as protectant before lyophilization.

Reconstitution

Centrifuge the vial before opening. Reconstitute to a concentration of 0.1-0.5 mg/mL in sterile distilled water. Avoid vortex or vigorously pipetting the protein. For long term storage, it is recommended to add a carrier protein or stabilizer (e.g. 0.1% BSA, 5% HSA, 10% FBS or 5% Trehalose), and aliquot the reconstituted protein solution to minimize free-thaw cycles.

Background

In the first trimester, the GM-CSF-R was found to be present on villous cytotrophoblast and all populations of extravillous trophoblast. Expression by villous syncytiotrophoblast was weak or absent, but this increased markedly by term. GM-CSF-R were also expressed by fetal Hofbauer cells within the mesenchyme of the chorionic villi and by uterine glandular epithelium and decidual macrophages within maternal decidua.

Basic Information

Description

Recombinant Human CSF2RA/GM-CSF R alpha/CD116 Protein is produced by HEK293 cells expression system. The target protein is expressed with sequence (Glu23-Gly320) of Human CSF2RA/GM-CSF R alpha/CD116 (Accession #P15509-1) fused with a C-His tag at the C-terminus.

Bio-Activity

Storage

Store at -20°C. Store the lyophilized protein at -20°C to -80 °C up to 1 year from the date of receipt. After reconstitution, the protein solution is stable at -20°C for 3 months, at 2-8°C for up to 1 week. Avoid repeated freeze/thaw cycles.

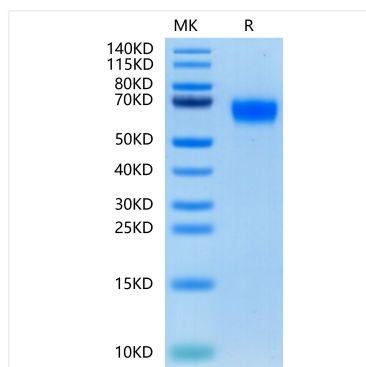
Contact

☎ | 400-999-6126

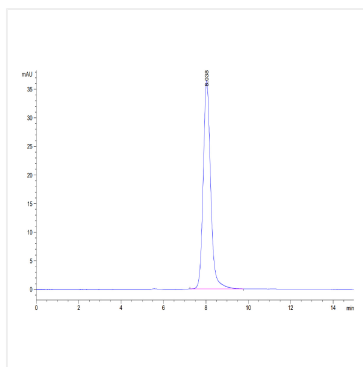
✉ | cn.market@abclonal.com.cn



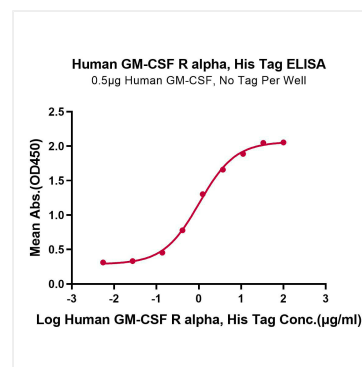
Validation Data



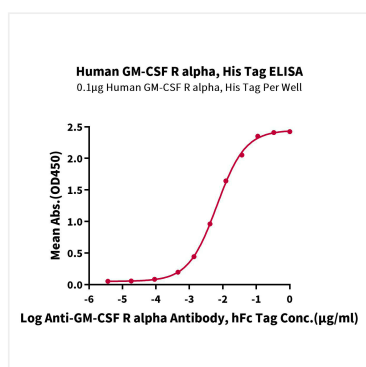
Recombinant Human CSF2RA/GM-CSF R alpha/CD116 Protein was determined by Tris-Bis PAGE under reducing conditions.



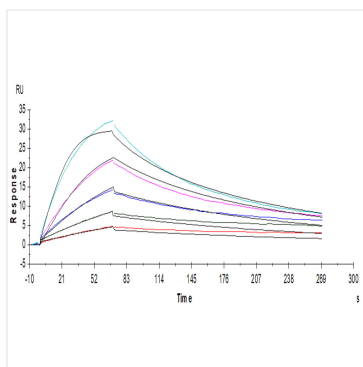
The purity of Human GM-CSF R alpha is greater than 95% as determined by SEC-HPLC.



Immobilized Human GM-CSF, No Tag at 5 µg/mL (100 µL/Well) on the plate. Dose response curve for Human GM-CSF R alpha, His Tag with the EC₅₀ of 1.0 µg/mL determined by ELISA.



Immobilized Human GM-CSF R alpha, His Tag at 1 µg/mL (100 µL/Well) on the plate. Dose response curve for Anti-GM-CSF R alpha Antibody, hFc Tag with the EC₅₀ of 6.6ng/mL determined by ELISA (QC Test).



Human GM-CSF R alpha, His Tag captured on CM5 Chip via anti-His antibody can bind Human GM-CSF, No Tag with an affinity constant of 0.79nM as determined in SPR assay (Biacore T200).