

Recombinant Human FAM3C Protein

Catalog No.: RP00514 **Recombinant**

Sequence Information

Species	Gene ID	Swiss Prot
Human	10447	Q92520

Tags
C-6×His

Synonyms
FAM3C;GS3786;ILEI

Product Information

Source	Purification
HEK293 cells	> 95% by SDS-PAGE.

Endotoxin
< 1 EU/μg of the protein by LAL method.

Formulation
Lyophilized from a 0.2 μm filtered solution of 20mM PB, 150mM NaCl, pH 7.2. Contact us for customized product form or formulation.

Reconstitution
Centrifuge the tube before opening. Reconstitute to a concentration of 0.1-0.5 mg/mL in sterile distilled water. Avoid vortex or vigorously pipetting the protein. For long term storage, it is recommended to add a carrier protein or stabilizer (e.g. 0.1% BSA, 5% HSA, 10% FBS or 5% Trehalose), and aliquot the reconstituted protein solution to minimize free-thaw cycles.

Contact

☎	400-999-6126
✉	cn.market@abclonal.com.cn
🌐	www.abclonal.com.cn

Background

FAM3C, also called interleukin-like EMT inducer, usually exist in most secretory epithelia. It belongs to the FAM3 family according to their sequence similarities. The up-regulation and/or mislocalization in breast cancer and liver carcinoma cells of FAM3C is strongly correlated with metastasis formation and survival. FAM3C can be involved in retinal laminar formation and promote epithelial to mesenchymal transition.

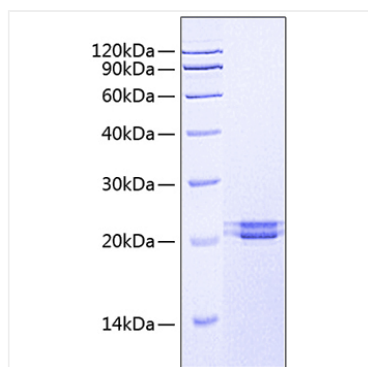
Basic Information

Description
Recombinant Human FAM3C Protein is produced by Human cells expression system. The target protein is expressed with sequence (Gln25-Asp227) of human FAM3C (Accession #Q92520) fused with a 6×His tag at the C-terminus.

Bio-Activity

Storage
Store the lyophilized protein at -20°C to -80 °C for long term. After reconstitution, the protein solution is stable at -20 °C for 3 months, at 2-8 °C for up to 1 week. Avoid repeated freeze/thaw cycles.

Validation Data



Recombinant Human FAM3C Protein was determined by SDS-PAGE under reducing conditions with Coomassie Blue.