

# Recombinant Human Siglec-3/CD33 Protein

Catalog No.: RP00554 **Recombinant**

## Sequence Information

Species	Gene ID	Swiss Prot
Human	945	P20138-1

### Tags

C-hFc

### Synonyms

CD33 molecule; CD33; FLJ00391; gp67; Siglec3; Siglec-3; p67

## Product Information

Source	Purification
HEK293 cells	> 95% by SDS-PAGE > 95% by HPLC

### Endotoxin

< 1 EU/μg of the protein by LAL method

### Formulation

Lyophilized from 0.22 μm filtered solution in PBS (pH 7.4). Normally 8% trehalose is added as protectant before lyophilization.

### Reconstitution

Centrifuge the vial before opening. Reconstitute to a concentration of 0.1-0.5 mg/mL in sterile distilled water. Avoid vortex or vigorously pipetting the protein. For long term storage, it is recommended to add a carrier protein or stabilizer (e.g. 0.1% BSA, 5% HSA, 10% FBS or 5% Trehalose), and aliquot the reconstituted protein solution to minimize free-thaw cycles.

## Contact

☎ | 400-999-6126

✉ | [cn.market@abclonal.com.cn](mailto:cn.market@abclonal.com.cn)

🌐 | [www.abclonal.com.cn](http://www.abclonal.com.cn)

## Background

Sialic-acid-binding immunoglobulin-like lectin (Siglec) that plays a role in mediating cell-cell interactions and in maintaining immune cells in a resting state. They are sialoadhesin/CD169/Siglec-1, CD22/Siglec-2, CD33/Siglec-3, Myelin-Associated Glycoprotein (MAG/Siglec-4a) and Siglecs 5 to 11. To date, no Siglec has been shown to recognized any cell surface ligand other than sialic acids, suggesting that interactions with glycans containing this carbohydrate are important in mediating the biological functions of Siglecs.

## Basic Information

### Description

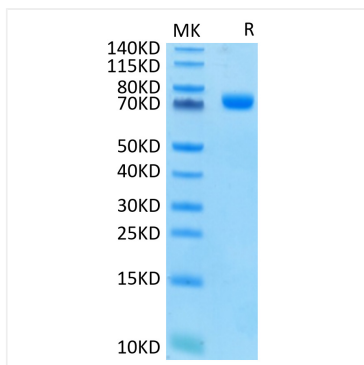
Recombinant Human Siglec-3/CD33 Protein is produced by HEK293 cells expression system. The target protein is expressed with sequence (Asp18-His259) of Human Siglec-3/CD33 (Accession #P20138-1) fused with a C-hFc tag at the C-terminus.

### Bio-Activity

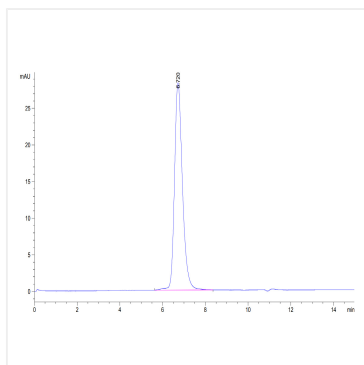
### Storage

Store the lyophilized protein at -20°C to -80°C for 12 months. After reconstitution, the protein solution is stable at -20°C for 3 months, at 2-8°C for up to 1 week. Avoid repeated freeze/thaw cycles.

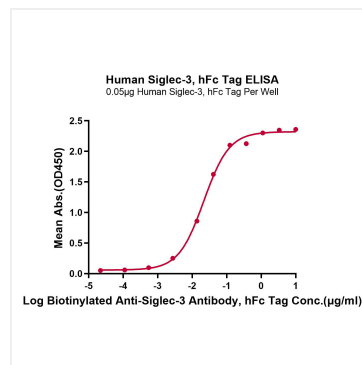
## Validation Data



Human Siglec-3 on Tris-Bis PAGE under reduced conditions. The purity is greater than 95%.



The purity of Human Siglec-3 is greater than 95% as determined by SEC-HPLC.



Immobilized Human Siglec-3, hFc Tag at 0.5 µg/mL (100 µL/well) on the plate. Dose response curve for Biotinylated Anti-Siglec-3 Antibody, hFc Tag with the EC<sub>50</sub> of 21.8ng/mL determined by ELISA.