

**Catalog No.: RP00579FLQ** **Recombinant**

Species	Gene ID	Swiss Prot
Human	933	P20273-1

## C-hFc

CD22 molecule; CD22; Siglec-2; B-cell receptor CD22; BL-CAM; SIGLEC2; SIGLEC2FLJ22814

<b>Source</b>	<b>Purification</b>
HEK293 cells	≥ 95 % as determined by SDS-PAGE.

Calculated MW	Observed MW
101.9 kDa	130-140 kDa

< 1 EU/μg of the protein by LAL method.

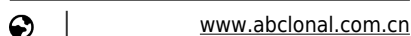
Supplied as 0.22  $\mu\text{m}$  filtered solution in PBS (pH 7.4).

CD22, or cluster of differentiation-22, is a molecule belonging to the SIGLEC family of lectins. It is found on the surface of mature B cells and to a lesser extent on some immature B cells. CD22 is a member of the immunoglobulin superfamily. CD22 functions as an inhibitory receptor for B cell receptor (BCR) signaling. It is also involved in the B cell trafficking to Peyer's patches in mice.

FITC-Labeled Recombinant Human Siglec-2/CD22 Protein is produced by HEK293 cells expression system. The target protein is expressed with sequence (Asp20-Arg687) of Human Siglec-2/CD22 (Accession #P20273-1) fused with a C-hFc tag at the C-terminus.

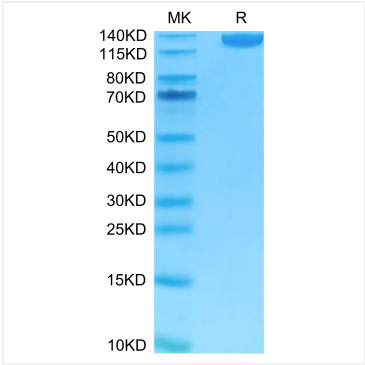
Store at -70°C. This product is stable at  $\leq -70^{\circ}\text{C}$  for up to 1 year from the date of receipt. For optimal storage, aliquot into smaller quantities after centrifugation and store at recommended temperature. Avoid repeated freeze-thaw cycles.

 | 400-999-6126



## Validation Data

---



FITC-Labeled Recombinant Human  
Siglec-2/CD22 Protein was determined by  
Tris-Bis PAGE under reducing conditions.