

Recombinant Human Siglec-2/CD22 Protein

Catalog No.: RP00580 **Recombinant**

Sequence Information

Species	Gene ID	Swiss Prot
Human	933	P20273-1

Tags

C-His

Synonyms

CD22; SIGLEC2; B-cell receptor CD22; B-lymphocyte cell adhesion molecule; BL-CAM; Sialic acid-binding Ig-like lectin 2; Siglec-2; T-cell surface antigen Leu-14; CD22

Product Information

Source	Purification
HEK293 cells	> 97% by SDS-PAGE.

Calculated MW	Observed MW
75.96 kDa	100-140 kDa

Endotoxin

< 0.01 EU/μg of the protein by LAL method.

Formulation

Lyophilized from a 0.22 μm filtered solution of PBS, pH 7.4.

Reconstitution

Centrifuge the vial before opening. Reconstitute to a concentration of 0.1-0.5 mg/mL in sterile distilled water. Avoid vortex or vigorously pipetting the protein. For long term storage, it is recommended to add a carrier protein or stabilizer (e.g. 0.1% BSA, 5% HSA, 10% FBS or 5% Trehalose), and aliquot the reconstituted protein solution to minimize free-thaw cycles.

Background

CD22, or cluster of differentiation-22, is a molecule belonging to the SIGLEC family of lectins. It is found on the surface of mature B cells and to a lesser extent on some immature B cells. CD22 is a member of the immunoglobulin superfamily. CD22 functions as an inhibitory receptor for B cell receptor (BCR) signaling. It is also involved in the B cell trafficking to Peyer's patches in mice.

Basic Information

Description

Recombinant Human Siglec-2/CD22 Protein is produced by HEK293 cells expression system. The target protein is expressed with sequence (Asp20-Arg687) of Human Siglec-2/CD22 Protein (Accession #NP_001762.2) fused with hFc tag and His tag at the C-terminus.

Bio-Activity

Storage

Store at -20°C. Store the lyophilized protein at -20°C to -80 °C up to 1 year from the date of receipt. After reconstitution, the protein solution is stable at -20°C for 3 months, at 2-8°C for up to 1 week. Avoid repeated freeze/thaw cycles.

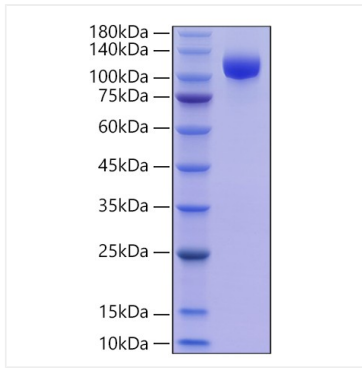
Contact

☎ | 400-999-6126

✉ | cn.market@abclonal.com.cn

🌐 | www.abclonal.com.cn

Validation Data



Recombinant Human Siglec-2/CD22 Protein was determined by SDS-PAGE with Coomassie Blue.