

Recombinant Human CD3 epsilon/CD3E Protein

Catalog No.: RP00601 **Recombinant**

Sequence Information

Species	Gene ID	Swiss Prot
Human	916	P07766

Tags

C-hFc

Synonyms

CD3e; CD3E; T3E; FLJ18683; TCRE; CD3-epsilon; IMD18

Product Information

Source	Purification
HEK293 cells	> 95% by SDS-PAGE

Endotoxin

< 1 EU/μg of the protein by LAL method

Formulation

Lyophilized from 0.22 μm filtered solution in PBS (pH 7.4). Normally 8% trehalose is added as protectant before lyophilization.

Reconstitution

Centrifuge the vial before opening. Reconstitute to a concentration of 0.1-0.5 mg/mL in sterile distilled water. Avoid vortex or vigorously pipetting the protein. For long term storage, it is recommended to add a carrier protein or stabilizer (e.g. 0.1% BSA, 5% HSA, 10% FBS or 5% Trehalose), and aliquot the reconstituted protein solution to minimize free-thaw cycles.

Contact

☎	400-999-6126
✉	cn.market@abclonal.com.cn
🌐	www.abclonal.com.cn

Background

T-cell surface glycoprotein CD3 epsilon & CD3 gamma chain, also known as CD3E & CD3G, are single-pass type I membrane proteins. When antigen presenting cells (APCs) activate T-cell receptor (TCR), TCR-mediated signals are transmitted across the cell membrane by the CD3 chains CD3D, CD3E, CD3G and CD3Z. All CD3 chains contain immunoreceptor tyrosine-based activation motifs (ITAMs) in their cytoplasmic domain.

Basic Information

Description

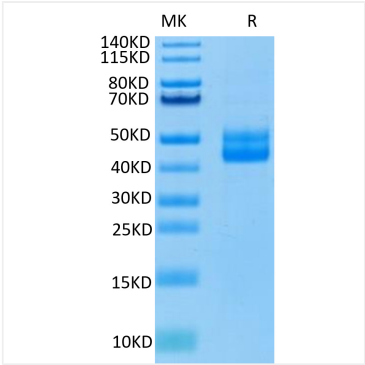
Recombinant Human CD3E/CD3 epsilon Protein is produced by HEK293 cells expression system. The target protein is expressed with sequence (Asp23-Asp126(C119S, C122S)) of Human CD3E/CD3 epsilon (Accession #P07766) fused with a C-hFc tag at the C-terminus.

Bio-Activity

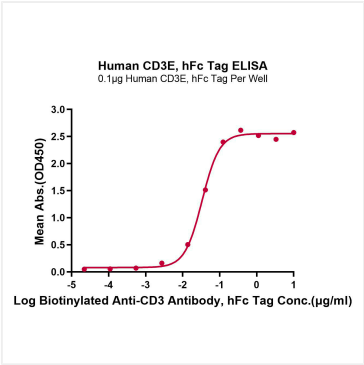
Storage

Store the lyophilized protein at -20°C to -80°C for 12 months. After reconstitution, the protein solution is stable at -20°C for 3 months, at 2-8°C for up to 1 week. Avoid repeated freeze/thaw cycles.

Validation Data



Human CD3E on Tris-Bis PAGE under reduced condition. The purity is greater than 95%.



Immobilized Human CD3E, hFc Tag at 1 µg/mL (100 µL/Well) on the plate. Dose response curve for Biotinylated Anti-CD3 Antibody, hFc Tag with the EC₅₀ of 33.5ng/mL determined by ELISA (QC Test).