

# Recombinant Rat CCL5/RANTES Protein

Catalog No.: RP00604 **Recombinant**

## Sequence Information

Species	Gene ID	Swiss Prot
Rat	81780	P50231

**Tags**  
N-6×His

### Synonyms

C-C motif chemokine 5; SIS-delta; Small-inducible cytokine A5; T-cell-specific protein RANTES; Ccl5; Scya5

## Product Information

Source	Purification
<i>E. coli</i>	> 95% by SDS-PAGE.

Calculated MW	Observed MW
10 kDa	13 kDa

**Endotoxin**  
< 1 EU/μg of the protein by LAL method.

### Formulation

Lyophilized from a 0.2 μm filtered solution of 20mM PB, 500mM NaCl, 2mM EDTA, pH7.4. Contact us for customized product form or formulation.

### Reconstitution

Reconstitute to a concentration of 0.1-0.5 mg/mL in sterile distilled water.

## Contact

☎ | 400-999-6126

✉ | [cn.market@abclonal.com.cn](mailto:cn.market@abclonal.com.cn)

🌐 | [www.abclonal.com.cn](http://www.abclonal.com.cn)

## Background

C-C motif chemokine 5 (CCL5) is a β-chemokine that plays a primary role in the inflammatory immune response by means of its ability to attract and activate leukocytes. CCL5 is secreted by many cell types at inflammatory sites, and it exerts a wide range of activities through the receptors CCR1, CCR3, CCR4, and CCR5. Inflammatory responses can be impaired by the sequestration of CCL5 by the cytomegalovirus protein US28. Oligomerization of CCL5 on glycosaminoglycans is required for CCR1-mediated leukocyte adhesion and activation as well as CCL5's interaction with the chemokine CXCL4/PF4. The deposition of CCL5 on activated vascular endothelial cells is crucial for monocyte adhesion to damaged vasculature, but CCL5 oligomerization is not required for the extravasation of adherent leukocytes. CCL5 is upregulated in breast cancer and promotes tumor progression through the attraction of proinflammatory macrophages in addition to its actions on tumor cells, stromal cells, and the vasculature.

## Basic Information

### Description

Recombinant Rat CCL5/RANTES Protein is produced by *E. coli* expression system. The target protein is expressed with sequence (Ser25-Ser92) of rat CCL5/RANTES (Accession #P50231) fused with an initial Met at the N-terminus and a 6×His tag at the N-terminus.

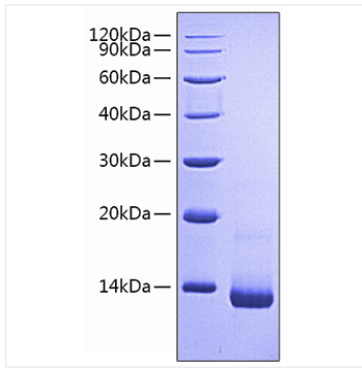
### Bio-Activity

### Storage

Store at -20°C. Store the lyophilized protein at -20°C to -80°C up to 1 year from the date of receipt. After reconstitution, the protein solution is stable at -20°C for 3 months, at 2-8°C for up to 1 week. Avoid repeated freeze/thaw cycles.

## Validation Data

---



Recombinant Rat CCL5/RANTES Protein was determined by SDS-PAGE under reducing conditions with Coomassie Blue, showing a band at 5-14 kDa.