

Recombinant Human Transcriptional Repressor Ctcf/Ctcf Protein

Catalog No.: RP00606 **Recombinant**

Sequence Information

Species	Gene ID	Swiss Prot
Human	10664	P49711

Tags

No tag

Synonyms

CTCF; MRD21; CCCTC-binding factor;MRD21;CTCF

Product Information

Source	Purification
<i>E. coli</i>	> 95% by SDS-PAGE.

Endotoxin

< 1 EU/μg of the protein by LAL method.


Formulation

Lyophilized from a 0.2 μM filtered solution of PBS, pH 7.4. Contact us for customized product form or formulation.

Reconstitution

Centrifuge the tube before opening. Reconstitute to a concentration of 0.1-0.5 mg/mL in sterile distilled water. Avoid vortex or vigorously pipetting the protein. For long term storage, it is recommended to add a carrier protein or stabilizer (e.g. 0.1% BSA, 5% HSA, 10% FBS or 5% Trehalose), and aliquot the reconstituted protein solution to minimize freeze-thaw cycles.

Contact

 | 400-999-6126

 | cn.market@abclonal.com.cn

 | www.abclonal.com.cn

Background

Transcriptional Repressor CTCF (CTCF) belongs to the CTCF Zinc-Finger Protein family. CTCF contains twelve C₂H₂-type zinc fingers and interacts with CHD8. CTCF is widely expressed in many tissues, and it is absent in primary spermatocytes. CTCF is involved in transcriptional regulation by binding to chromatin insulators and preventing interaction between promoter and nearby enhancers and silencers. CTCF plays an essential role in oocyte and preimplantation embryo development by activating or repressing transcription. In addition, CTCF is also indispensable in the epigenetic regulation and chromatin remodeling.

Basic Information

Description

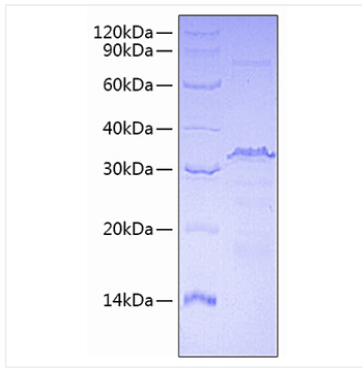
Recombinant Human Transcriptional Repressor Ctcf/Ctcf Protein is produced by *E. coli* expression system. The target protein is expressed with sequence (Met1-Ile154) of human Transcriptional Repressor Ctcf/Ctcf (Accession #P49711).

Bio-Activity

Storage

Store the lyophilized protein at -20°C to -80 °C for long term. After reconstitution, the protein solution is stable at -20 °C for 3 months, at 2-8 °C for up to 1 week. Avoid repeated freeze/thaw cycles.

Validation Data



Recombinant Human Transcriptional Repressor Ctcf/Ctcf Protein was determined by SDS-PAGE under reducing conditions with Coomassie Blue.