

# Recombinant Human Alpha-synuclein/SNCA Protein

Catalog No.: RP00610 **Recombinant**

## Sequence Information

Species	Gene ID	Swiss Prot
Human	6622	P37840

### Tags

N-His

### Synonyms

PD1;NACP;PARK1;PARK4;SNCA

## Product Information

Source	Purification
<i>E. coli</i>	> 95% by SDS-PAGE.

### Endotoxin

< 1 EU/μg of the protein by LAL method.

### Formulation

Lyophilized from a 0.2 μm filtered solution of 20mM PB, 150mM NaCl, pH7.4. Contact us for customized product form or formulation.

### Reconstitution

Reconstitute to a concentration of 0.1-0.5 mg/mL in sterile distilled water.

## Background

Alpha-Synuclein (SNCA) is a member of the Synuclein family. SNCA is expressed principally in brain but also expressed in low concentrations in all tissues except liver. SNCA interacts with UCHL1, Phospholipase D and histones. SNCA can include beta- and gamma-synuclein. In addition, SNCA is an important regulatory component of vesicular transport in neuronal cells. It has been suggested that SNCA is related to the pathogenesis of Parkinson's Disease and neurodegenerative disorders. Defects in SNCA will lead to Dementia Lewy Body (DLB).

## Basic Information

### Description

Recombinant Human Alpha-synuclein/SNCA Protein is produced by *E. coli* expression system. The target protein is expressed with sequence (Met1-Ala140) of human SNCA/Alpha-synuclein (Accession #P37840).

### Bio-Activity

### Storage

Store the lyophilized protein at -20°C to -80 °C for long term.

After reconstitution, the protein solution is stable at -20 °C for 3 months, at 2-8 °C for up to 1 week.

Avoid repeated freeze/thaw cycles.

## Contact

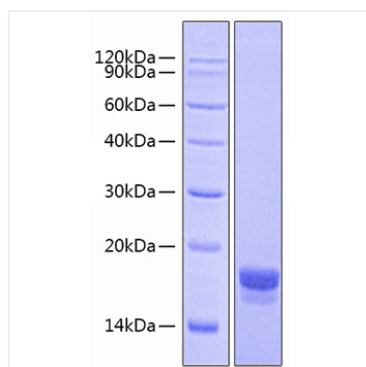
☎ | 400-999-6126

✉ | [cn.market@abclonal.com.cn](mailto:cn.market@abclonal.com.cn)

🌐 | [www.abclonal.com.cn](http://www.abclonal.com.cn)

## Validation Data

---



Recombinant Human Alpha-synuclein/SNCA Protein was determined by SDS-PAGE under reducing conditions with Coomassie Blue, showing a band at 17 kDa.