

Recombinant Human TNFRSF17/BCMA/CD269 Protein

Catalog No.: RP00612 **Recombinant**

Sequence Information

Species	Gene ID	Swiss Prot
Human	608	Q02223-1

Tags

C-His&Avi

Synonyms

CD269; TNFRSF17; BCMA; BCM;
TNFRSF13A

Product Information

Source	Purification
HEK293 cells	> 95% by SDS-PAGE > 95% by HPLC

Calculated MW **Observed MW**

Endotoxin

< 1 EU/μg of the protein by LAL method

Formulation

Lyophilized from 0.22 μm filtered solution in PBS (pH 7.4). Normally 8% trehalose is added as protectant before lyophilization.

Reconstitution

Centrifuge the vial before opening. Reconstitute to a concentration of 0.1-0.5 mg/mL in sterile distilled water. Avoid vortex or vigorously pipetting the protein. For long term storage, it is recommended to add a carrier protein or stabilizer (e.g. 0.1% BSA, 5% HSA, 10% FBS or 5% Trehalose), and aliquot the reconstituted protein solution to minimize free-thaw cycles.

Contact

☎ | 400-999-6126

✉ | cn.market@abclonal.com.cn

🌐 | www.abclonal.com.cn

Background

B-cell maturation antigen (BCMA or BCM), also known as tumor necrosis factor receptor superfamily member 17 (TNFRSF17), is a protein that in humans is encoded by the TNFRSF17 gene. TNFRSF17 is a cell surface receptor of the TNF receptor superfamily which recognizes B-cell activating factor (BAFF).

Basic Information

Description

Recombinant Human TNFRSF17/BCMA/CD269 Protein is produced by HEK293 cells expression system. The target protein is expressed with sequence (Met1-Ala54) of Human TNFRSF17/BCMA/CD269 (Accession #Q02223-1) fused with a C-His&Avi tag at the C-terminus.

Bio-Activity

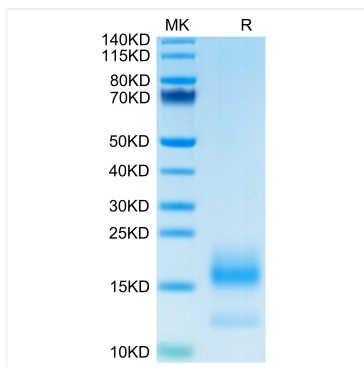
Storage

Store at -20°C. Store the lyophilized protein at -20°C to -80 °C up to 1 year from the date of receipt.

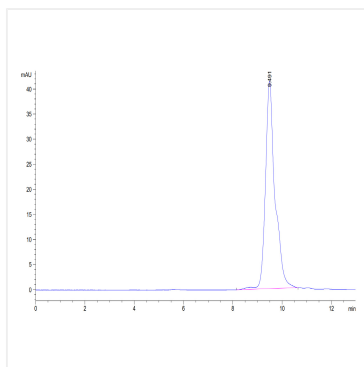
After reconstitution, the protein solution is stable at -20°C for 3 months, at 2-8°C for up to 1 week.

Avoid repeated freeze/thaw cycles.

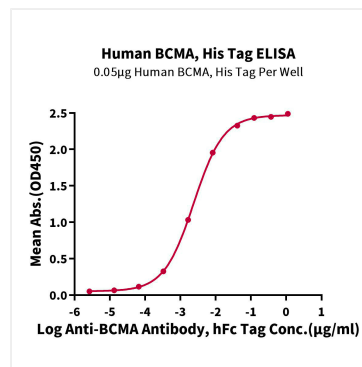
Validation Data



Human BCMA on Tris-Bis PAGE under reduced condition. The purity is greater than 95%.



The purity of Human BCMA is greater than 95% as determined by SEC-HPLC.



Immobilized Human BCMA, His Tag at 0.5 µg/mL (100 µL/Well) on the plate. Dose response curve for Anti-BCMA Antibody, hFc Tag with the EC_{50} of 2.4ng/mL determined by ELISA.