

Recombinant Mouse CCL9 Protein

Catalog No.: RP00625 **Recombinant**

Sequence Information

Species	Gene ID	Swiss Prot
Mouse	20308	P51670

Tags

No tag

Synonyms

C-C motif chemokine 9; CCF18; Macrophage inflammatory protein 1-gamma; Macrophage inflammatory protein-related protein 2; Small-inducible cytokine A9; Scya10; Scya9 and CCL9.

Product Information

Source	Purification
<i>E. coli</i>	> 95% by SDS-PAGE.

Endotoxin

< 1 EU/μg of the protein by LAL method.

Formulation

Lyophilized from a 0.2 μm filtered solution of 20mM TrisHCl, 300mM NaCl, pH8.0. Contact us for customized product form or formulation.

Reconstitution

Reconstitute to a concentration of 0.1-0.5 mg/mL in sterile distilled water.

Background

C-C motif chemokine 9 (CCL9) is an 11 kDa, secreted, monomeric polypeptide that belongs to the beta (or CC) intercrine family of chemokines. It is expressed mainly in the liver, lung, and the thymus, although some expression has been detected in a wide variety of tissues except brain. Monokine has inflammatory, pyrogenic and chemokinetic properties. It circulates at high concentrations in the blood of healthy animals. Binding to a high-affinity receptor it activates calcium release in neutrophils. It also inhibits colony formation of bone marrow myeloid immature progenitors. CCL9 can activate osteoclasts through its receptor CCR1 (the most abundant chemokine receptor found on osteoclasts) suggesting an important role for CCL9 in bone resorption.

Basic Information

Description

Recombinant Mouse CCL9 Protein is produced by *E. coli* expression system. The target protein is expressed with sequence (Gln22-Gln122) of mouse CCL9 (Accession #P51670) fused with an initial Met at the N-terminus.

Bio-Activity

Storage

Store the lyophilized protein at -20°C to -80 °C for long term.

After reconstitution, the protein solution is stable at -20 °C for 3 months, at 2-8 °C for up to 1 week.

Avoid repeated freeze/thaw cycles.

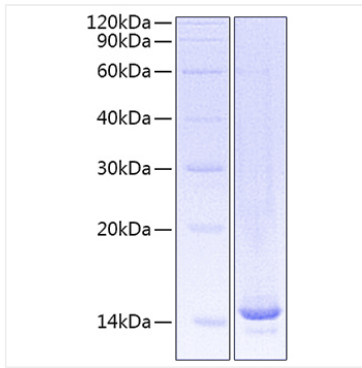
Contact

☎ | 400-999-6126

✉ | cn.market@abclonal.com.cn

🌐 | www.abclonal.com.cn

Validation Data



Recombinant Mouse CCL9 Protein was determined by SDS-PAGE under reducing conditions with Coomassie Blue.