

# Recombinant Human IL-27/IL-27A&IL-27B Protein

**Catalog No.:** RP00639 **Recombinant**

## Sequence Information

Species	Gene ID	Swiss Prot
Human	246778 □10148	Q8NEV9&Q1 4213

### Tags

N-His□NO-tag

### Synonyms

IL27A&amp;IL27B;Interleukin-27 subunit alpha&amp;Interleukin-27 subunit beta;IL-27 subunit alpha&amp;IL-27 subunit beta;IL-27A&amp;IL-27B

## Product Information

Source	Purification
HEK293 cells	> 95% by SDS-PAGE.

Calculated MW	Observed MW
50.6 kDa	54-64 kDa

### Endotoxin

&lt; 1 EU/μg of the protein by LAL method.


### Formulation

Lyophilized from a 0.22 μm filtered solution of PBS, pH 7.4.

### Reconstitution

Centrifuge the vial before opening. Reconstitute to a concentration of 0.1-0.5 mg/mL in sterile distilled water. Avoid vortex or vigorously pipetting the protein. For long term storage, it is recommended to add a carrier protein or stabilizer (e.g. 0.1% BSA, 5% HSA, 10% FBS or 5% Trehalose), and aliquot the reconstituted protein solution to minimize free-thaw cycles.

## Contact

 | 400-999-6126

 | [cn.market@abclonal.com.cn](mailto:cn.market@abclonal.com.cn)
 | [www.abclonal.com.cn](http://www.abclonal.com.cn)

## Background

IL-27 protein is a member of the IL-6 superfamily, which is expressed on monocytes, endothelial cells, and dendritic cells. IL-27 protein is also referred to as the IL-12 p35-related protein, p28, is one subunit of a heterodimeric cytokine complex, and associates with another subunit EBI3, and IL-12 p40-related protein (IL-27B). IL-27 protein is an early product of activated antigen-presenting cells and drives the rapid clonal expansion of naive CD4(+) T cells and plays a role in the early regulation of Th1 cells initiation which drives efficient adaptive immune response. IL-27 protein has an antiproliferative activity on melanomas through WSX-1/STAT1 signaling. Thus, IL-27 protein may be an attractive candidate as an antitumor agent applicable to cancer immunotherapy.

## Basic Information

### Description

Recombinant Human IL-27/IL-27A&IL-27B Protein is produced by HEK293 cells expression system. The target protein is expressed with sequence (Phe29-Pro243 □Arg21-Lys229□of IL-27A (Accession #NP\_663634.2) fused with a His tag at the N-terminus and IL-27B (Accession #NP\_035692.2) fused with no Tag.

### Bio-Activity

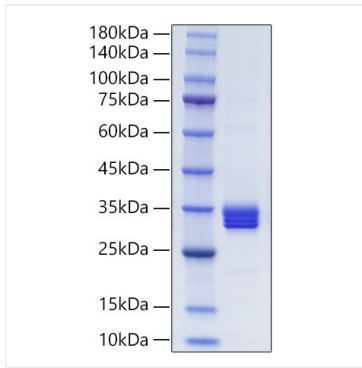
#### Storage

Store at -20°C. Store the lyophilized protein at -20°C to -80°C up to 1 year from the date of receipt.

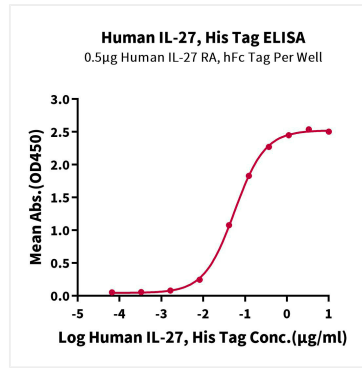
After reconstitution, the protein solution is stable at -20°C for 3 months, at 2-8°C for up to 1 week.

Avoid repeated freeze/thaw cycles.

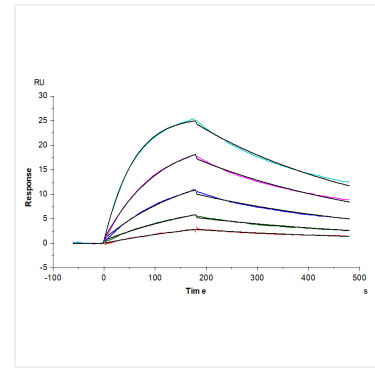
## Validation Data



Recombinant Human IL-27/IL-27A&IL-27B Protein was determined by SDS-PAGE with Coomassie Blue, showing a band at 25-35 kDa.



Immobilized Human IL-27 RA, hFc Tag at 5 µg/mL (100 µL/well) on the plate. Dose response curve for Human IL-27, His Tag with the  $EC_{50}$  of 55.9ng/mL determined by ELISA (QC Test).



Human IL-27 RA, hFc Tag captured on CM5 Chip via Protein A can bind Human IL-27, His Tag with an affinity constant of 3.58 nM as determined in SPR assay (Biacore T200).