

# Recombinant Mouse Apolipoprotein E/APOE Protein

Catalog No.: RP00640 **Recombinant**

## Sequence Information

Species	Gene ID	Swiss Prot
Mouse	11816	P08226

### Tags

C-His

### Synonyms

APOE;AD2;APO-E;ApoE4;LDLCQ5;LPG;AI255918;Apo-E;ApoE

## Product Information

Source	Purification
HEK293 cells	> 95% by SDS-PAGE.

### Endotoxin

&lt; 1 EU/μg of the protein by LAL method.

### Formulation

Lyophilized from a 0.22 μm filtered solution of PBS, pH 7.4.

### Reconstitution

Centrifuge the tube before opening. Reconstitute to a concentration of 0.1-0.5 mg/mL in sterile distilled water. Avoid vortex or vigorously pipetting the protein. For long term storage, it is recommended to add a carrier protein or stabilizer (e.g. 0.1% BSA, 5% HSA, 10% FBS or 5% Trehalose), and aliquot the reconstituted protein solution to minimize free-thaw cycles.

## Contact

 | 400-999-6126 | [cn.market@abclonal.com.cn](mailto:cn.market@abclonal.com.cn) | [www.abclonal.com.cn](http://www.abclonal.com.cn)

## Background

Apolipoprotein E (Apo-E), is a member of the apolipoprotein A1/A4/E family. ApoE is a major protein component of serum LDL, VLDL, HDL, and chylomicrons. APOE may function in mediating the binding, internalization, and catabolism of lipoprotein particles. It can serve as a ligand for the LDL (apo B/E) receptor and for the specific apo-E receptor (chylomicron remnant) of hepatic tissues. APOE is usually secreted into plasma. Phosphorylation sites are present in the extracellular medium.

## Basic Information

### Description

Recombinant Mouse ApoE/APOE/Apolipoprotein E Protein is produced by Human cells expression system. The target protein is expressed with sequence (Glu19-Gln311) of mouse ApoE/APOE/Apolipoprotein E (Accession #P08226) fused with a 6xHis tag at the C-terminus.

### Bio-Activity

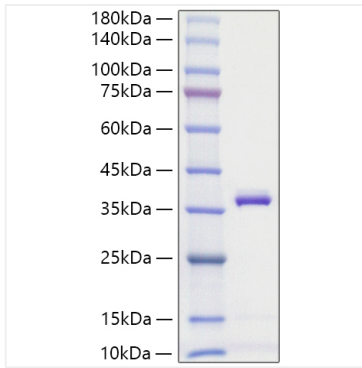
Measured by its binding ability in a functional ELISA. Immobilized Mouse APOE (Catalog: RP00640) at 5 μg/mL (100 μL/well) can bind Mouse TREM2 (Catalog: RP01558) with a linear range of 0.16-1.5 μg/mL.

### Storage

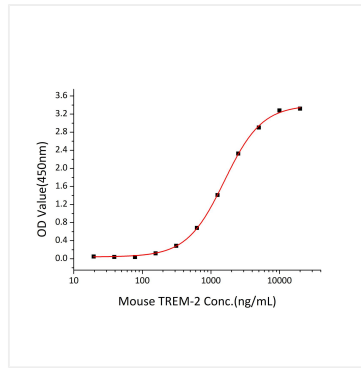
Store at -20°C. Store the lyophilized protein at -20°C to -80°C up to 1 year from the date of receipt. After reconstitution, the protein solution is stable at -20°C for 3 months, at 2-8°C for up to 1 week. Avoid repeated freeze/thaw cycles.

## Validation Data

---



Recombinant Mouse ApoE/APOE/Apolipoprotein E Protein was determined by SDS-PAGE with Coomassie Blue, showing a band at 35-45 kDa.



Immobilized Mouse APOE(Catalog: RP00640 ) at 5 $\mu$ g/mL (100  $\mu$ L/well) can bind Mouse TREM2(Catalog: RP01558) with a linear range of 0.16-1.5 $\mu$ g/mL.