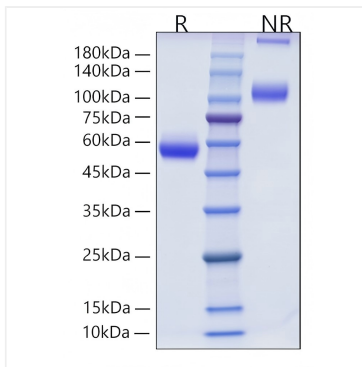
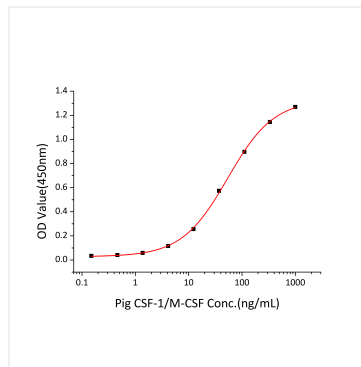




## Validation Data



Recombinant Pig CSF-1/M-CSF Protein was determined by SDS-PAGE under reducing (R) and non-reducing (NR) conditions.



Measured in a cell proliferation assay using M-NFS-60 mouse myelogenous leukemia lymphoblast cells. The  $ED_{50}$  for this effect is 26.97-107.86 ng/mL, corresponding to a specific activity of  $9.3 \times 10^3$ – $3.71 \times 10^4$  units/mg.