

# Recombinant Mouse SNCA/Alpha-Synuclein Protein

Catalog No.: RP00700 **Recombinant**

## Sequence Information

Species	Gene ID	Swiss Prot
Mouse	20617	O55042-1

### Tags

No tag

### Synonyms

Alpha-synuclein; Non-A beta component of AD amyloid; Non-A4 component of amyloid precursor; NACP; Snca

## Product Information

Source	Purification
<i>E. coli</i>	> 95% by SDS-PAGE.

### Endotoxin

< 1 EU/μg

### Formulation

Lyophilized from a 0.2 μm filtered solution of PBS, pH7.4. Contact us for customized product form or formulation.

### Reconstitution

Centrifuge the tube before opening. Reconstitute to a concentration of 0.1-0.5 mg/mL in sterile distilled water. Avoid vortex or vigorously pipetting the protein. For long term storage, it is recommended to add a carrier protein or stabilizer (e.g. 0.1% BSA, 5% HSA, 10% FBS or 5% Trehalose), and aliquot the reconstituted protein solution to minimize freeze-thaw cycles.

## Contact

☎ | 400-999-6126

✉ | [cn.market@abclonal.com.cn](mailto:cn.market@abclonal.com.cn)

🌐 | [www.abclonal.com.cn](http://www.abclonal.com.cn)

## Background

Alpha-Synuclein (SNCA) is a member of the Synuclein family. SNCA is expressed principally in brain but also expressed in low concentrations in all tissues except liver. SNCA interacts with UCHL1, Phospholipase D and histones. SNCA can include beta- and gamma-synuclein. In addition, SNCA is an important regulatory component of vesicular transport in neuronal cells. It has been suggested that SNCA is related to the pathogenesis of Parkinson's Disease and neurodegenerative disorders. Defects in SNCA will lead to Dementia Lewy Body (DLB).

## Basic Information

### Description

Recombinant Mouse SNCA/Alpha-Synuclein Protein is produced by *E. coli* expression system. The target protein is expressed with sequence (Met1-Ala140) of mouse SNCA/Alpha-Synuclein (Accession #O55042).

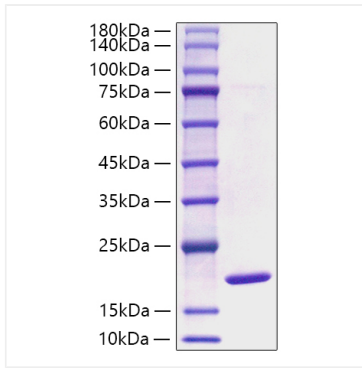
### Bio-Activity

### Storage

Store at -20°C. Store the lyophilized protein at -20°C to -80 °C up to 1 year from the date of receipt. After reconstitution, the protein solution is stable at -20°C for 3 months, at 2-8°C for up to 1 week. Avoid repeated freeze/thaw cycles.

## Validation Data

---



Recombinant Mouse SNCA/Alpha-Synuclein Protein was determined by SDS-PAGE with Coomassie Blue, showing a band at 15-25 kDa.