

Recombinant Human Fc epsilon RII/CD23 Protein

Catalog No.: RP00770 **Recombinant**

Sequence Information

Species	Gene ID	Swiss Prot
Human	2208	P06734

Tags
N-8×His

Synonyms
BLAST-2; CD23; CD23A; CLEC4J; FCE2;
IGEBF; FCER2; BLAST-2; Fc fragment of
IgE receptor
II; CD23; CD23A; CLEC4J; FCE2; IGEBF

Product Information

Source	Purification
HEK293 cells	> 95% by SDS-PAGE.

Endotoxin
< 1 EU/μg of the protein by LAL method.

Formulation
Lyophilized from a 0.2 μm filtered solution of PBS, pH7.4. Contact us for customized product form or formulation.

Reconstitution
Reconstitute to a concentration of 0.1-0.5 mg/mL in sterile distilled water.

Background

Low affinity immunoglobulin epsilon Fc receptor (CD23) is a secreted and single-pass type II membrane protein which is also exists as a soluble excreted form. There are two forms of CD23: CD23a and CD23b. CD23a is present on follicular B cells, whereas CD23b requires IL-4 to be expressed on T-cells, monocytes, Langerhans cells, eosinophils, and macrophages. Unlike many of the antibody receptors, CD23/FCER2 is a C-type lectin. It is found on mature B cells, activated macrophages, eosinophils, follicular dendritic cells, and platelets. In flow cytometry, CD23/FCER2 is helpful in the differentiation of chronic lymphocytic leukemia (CD23-positive) from mantle cell leukemia (CD23-negative). CD23/FCER2 can also be demonstrated in germinal centre B-cells using immunohistochemistry, but it is not present in the resting cells of the surrounding mantle zone. CD23/FCER2 has essential roles in the regulation of IgE production and in the differentiation of B-cells (it is a B-cell-specific antigen).

Basic Information

Description
Recombinant Human Fc epsilon RII/CD23 Protein is produced by Human cells expression system. The target protein is expressed with sequence (Asp48-Ser321) of human Fc epsilon RII/CD23 (Accession #P06734) fused with an 8×His tag at the N-terminus.

Bio-Activity

Storage
Store the lyophilized protein at -20 °C to -80 °C for long term.
After reconstitution, the protein solution is stable at -20 °C for 3 months, at 2-8 °C for up to 1 week.
Avoid repeated freeze/thaw cycles.

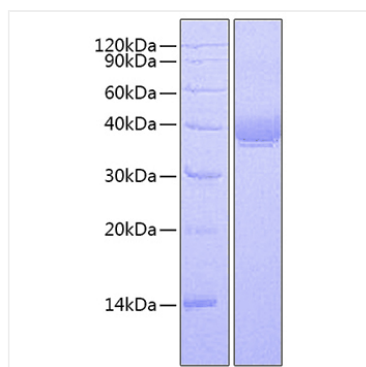
Contact

☎ | 400-999-6126

✉ | cn.market@abclonal.com.cn

🌐 | www.abclonal.com.cn

Validation Data



Recombinant Human Fc epsilon RII/CD23
Protein was determined by SDS-PAGE under
reducing conditions with Coomassie Blue.