

Catalog No.: RP00782LQ **Recombinant**

Species	Gene ID	Swiss Prot
Human	10268	O60896

C-8xHis

RAMP3; Receptor activity-modifying protein 3; RAMP3-H

Source	Purification
CHO Cells	≥ 95 % as determined by SDS-PAGE

Calculated MW	Observed MW
11.89 kDa	25-35 kDa

< 0.1 EU/μg of the protein by LAL method.

Supplied as 0.22µm filtered solution in PBS (pH 7.4).

Contact

 | 400-999-6126

 | cn.market@abclonal.com.cn

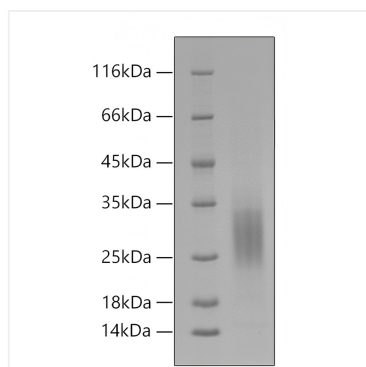
 | www.abclonal.com.cn

RAMP3 belongs to the RAMP family. Accessory protein that interacts with and modulates the function of G-protein coupled receptors including calcitonin gene-related peptide type 1 receptor (CALCRL), calcitonin receptor (CALCR) and G-protein coupled estrogen receptor 1 (GPER1). Required for the transport of CALCRL and GPER1 receptors to the plasma membrane. Plays a role in cardioprotection by reducing cardiac hypertrophy and perivascular fibrosis in a GPER1-dependent manner. Together with CALCRL, form a receptor complex for adrenomedullin/ADM and intermedin/ADM2. Together with CALCR, act as a receptor complex for amylin/IAPP.

Recombinant Human RAMP3(M33L) Protein is produced by CHO Cells system. The target protein is expressed with sequence (Arg24-Val118) of Human RAMP3 (Accession #NP_005847.1) fused with His tag at the C-Terminus..

Store at -70°C. This product is stable at $\leq -70^{\circ}\text{C}$ for up to 1 year from the date of receipt. For optimal storage, aliquot into smaller quantities after centrifugation and store at recommended temperature. Avoid repeated freeze-thaw cycles.
Avoid repeated freeze/thaw cycles.

Validation Data



Recombinant Human RAMP3(M33L) Protein was determined by SDS-PAGE with Coomassie Blue.